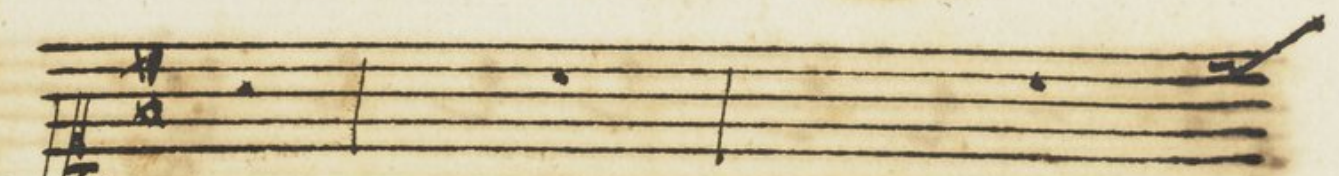


Del sig. Perki



quel ben che m-innamora



a quel ben che m'innamora non mancai

The first system of the handwritten musical score consists of two staves. The upper staff is a vocal line with a treble clef and a key signature of one flat (B-flat). It contains two measures of music with lyrics underneath. The lower staff is a piano accompaniment line with a bass clef and a key signature of one flat. It contains two measures of music corresponding to the vocal line.

non mancai già mai di fe - - -

The second system of the handwritten musical score also consists of two staves. The upper staff is a vocal line with a treble clef and a key signature of one flat. It contains two measures of music with lyrics underneath. The lower staff is a piano accompaniment line with a bass clef and a key signature of one flat. It contains two measures of music corresponding to the vocal line.

Handwritten musical score for the first system. The vocal line (treble clef) contains a melody with various note values and rests. The basso continuo line (bass clef) provides harmonic support with chords and single notes. The lyrics are: *- de ne' mancar* followed by a long dash, and *di fe' ra'*.

Handwritten musical score for the second system. The vocal line (treble clef) continues the melody. The basso continuo line (bass clef) continues the harmonic support. The lyrics are: *- pro' a quell' ben ch' m' inna - mora non man -*

Handwritten musical notation for the first system. The top staff is a vocal line in treble clef with a key signature of one sharp (F#) and a common time signature (C). The bottom staff is a bass line in bass clef with a key signature of one sharp (F#) and a common time signature (C). The lyrics are written below the vocal line.

car'gia mai di se - - - - - de ne'man-

Handwritten musical notation for the second system. The top staff is a vocal line in treble clef with a key signature of one sharp (F#) and a common time signature (C). The bottom staff is a bass line in bass clef with a key signature of one sharp (F#) and a common time signature (C). The lyrics are written below the vocal line.

- car - - - - - di se sa -

pro' ne' mancar' — — — di se'ra-

= pro' e se ingrato uost ch' se mora

Handwritten musical notation for the first system. The top staff is a vocal line with a treble clef and a common time signature. The bottom staff is a lute line with a C-clef and a common time signature. The lyrics are written between the staves.

esc ingratu uult h. Jo mora perche

Handwritten musical notation for the second system. The top staff is a vocal line with a treble clef and a common time signature. The bottom staff is a lute line with a C-clef and a common time signature. The lyrics are written between the staves.

fida non mi crede Jo contenta mori

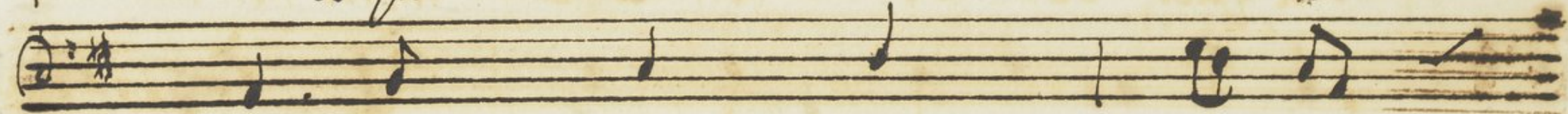
Handwritten musical score on aged paper, featuring four staves of music with lyrics in Italian. The lyrics are:

ro' - - - - - Io contenta mori..

ro' Io contenta mori - - ro'



a quel ben che m'inna- - mora



a quel

The image shows two systems of handwritten musical notation on aged paper. Each system consists of two staves. The upper staff of each system is for a vocal line, and the lower staff is for a basso continuo line. The lyrics are written in a cursive hand between the staves.

a quel ben che m'inna- - mora non mancai

non mancai già mai di fe - - -

Handwritten musical score on aged paper, featuring four staves of music and Italian lyrics. The notation includes various note values, rests, and dynamic markings such as *ff* and *sf*. The lyrics are written in a cursive hand below the staves.

de ne' mancar — — — — — *ff* *sf* la —

M spro' a quell ten che m-innamora non man-

Handwritten musical score on aged paper, featuring two systems of music. The lyrics are in Latin: "cuius iam mai di fe - - - - - de ne man -" and "- car - - - - - di fe sa -". The notation includes treble clefs, a key signature of one sharp (F#), and various musical symbols such as notes, rests, and accidentals. The paper shows signs of age, including staining and discoloration.

System 1:
 Top staff: Treble clef, key signature of one sharp (F#). The melody begins with a quarter note G4, followed by eighth notes A4-B4, quarter notes C5-B4, and quarter notes A4-G4. The second measure contains a complex figure with many beamed notes, including a sixteenth-note run. The lyrics "cuius iam mai di fe - - - - - de ne man -" are written below the staff, with long horizontal lines indicating extended notes or rests.

System 2:
 Top staff: Treble clef, key signature of one sharp (F#). The melody starts with a quarter note G4, followed by a half note A4, and then a quarter note B4. The lyrics "- car - - - - - di fe sa -" are written below the staff, with long horizontal lines indicating extended notes or rests.

Handwritten musical score on aged paper. The score consists of two staves. The top staff begins with a treble clef and a 2/4 time signature. The bottom staff begins with a bass clef and a 2/4 time signature. The lyrics are written between the staves: "pro' ne' mancar" on the first line, followed by a double bar line and "di se' sopra' Fine" on the second line. The music is written in a simple, clear hand. The paper shows signs of age, including yellowing and some staining.

2
pro' ne' mancar - - - di se' sopra' Fine