

Pouero cor lo lo' non

The first system of handwritten musical notation consists of two staves. The upper staff is a vocal line in treble clef, starting with a C-clef and a common time signature. It contains a series of notes with stems, including a half note followed by several quarter notes. The lower staff is a basso continuo line in bass clef, starting with a C-clef and a common time signature. It contains a few notes, including a half note and a quarter note, with a fermata over the final note.



piangià torto no', lo'

The second system of handwritten musical notation also consists of two staves. The upper staff is a vocal line in treble clef, starting with a C-clef and a common time signature. It contains a series of notes with stems, including a half note followed by several quarter notes. The lower staff is a basso continuo line in bass clef, starting with a C-clef and a common time signature. It contains a series of notes with stems, including a half note followed by several quarter notes.



So non piangi a torto no' povero core lo'

The first system of a handwritten musical score. It consists of two staves. The upper staff is a vocal line in G major, starting with a treble clef and a common time signature. The melody begins with a half note G4, followed by quarter notes A4, B4, C5, B4, A4, G4, and a dotted half note G4. The lower staff is a basso continuo line in G major, starting with a bass clef and a common time signature. The bass line begins with a half note G3, followed by quarter notes A3, B3, C4, B3, A3, G3, and a dotted half note G3. The lyrics 'So non piangi a torto no' povero core lo'' are written between the two staves.

So non piangi a torto no' povero core

The second system of the handwritten musical score, continuing from the first. It also consists of two staves. The upper staff is a vocal line in G major, starting with a treble clef and a common time signature. The melody continues with a dotted half note G4, followed by quarter notes A4, B4, C5, B4, A4, G4, and a dotted half note G4. The lower staff is a basso continuo line in G major, starting with a bass clef and a common time signature. The bass line continues with a dotted half note G3, followed by quarter notes A3, B3, C4, B3, A3, G3, and a dotted half note G3. The lyrics 'So non piangi a torto no' povero core' are written between the two staves.



Handwritten musical score on aged paper, page 52. The score consists of four staves. The top staff is a vocal line with lyrics "= ve -" and "Ti". The second staff is a bass line. The third staff is a vocal line with lyrics "compatisco tanto tanto che mi comouo al". The bottom staff is a bass line. The music is written in a historical style with various clefs and time signatures.

*= ve -*

*Ti*

*compatisco tanto tanto che mi comouo al*



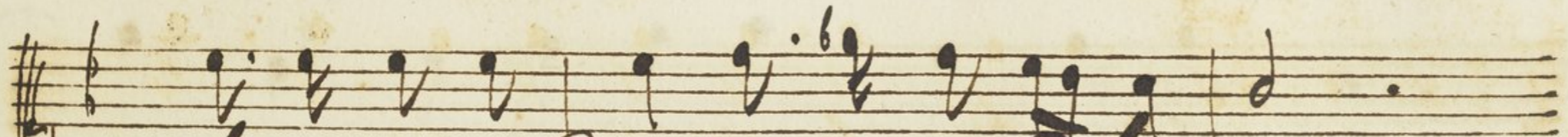
*pianissimo* che l'essere tradita, e

The first system of handwritten musical notation consists of two staves. The upper staff is a vocal line in treble clef with a key signature of one sharp (F#) and a common time signature (C). It begins with a half rest followed by a quarter note G4, a quarter note A4, a quarter note B4, a quarter note C5, a quarter note B4, a quarter note A4, a quarter note G4, a quarter note F#4, and a quarter note E4. The lower staff is a basso continuo line in bass clef with a common time signature (C). It begins with a half rest followed by a quarter note G3, a quarter note A3, a quarter note B3, a quarter note C4, a quarter note B3, a quarter note A3, a quarter note G3, a quarter note F#3, and a quarter note E3.

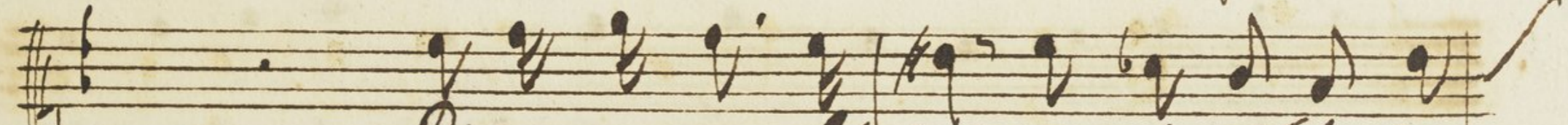
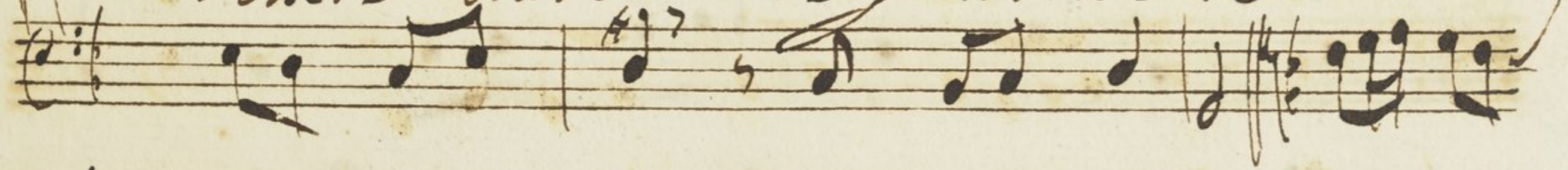
gran dolore tanto, si compatisco che

The second system of handwritten musical notation also consists of two staves. The upper staff is a vocal line in treble clef with a key signature of one sharp (F#) and a common time signature (C). It begins with a half rest followed by a quarter note G4, a quarter note A4, a quarter note B4, a quarter note C5, a quarter note B4, a quarter note A4, a quarter note G4, a quarter note F#4, and a quarter note E4. The lower staff is a basso continuo line in bass clef with a common time signature (C). It begins with a half rest followed by a quarter note G3, a quarter note A3, a quarter note B3, a quarter note C4, a quarter note B3, a quarter note A3, a quarter note G3, a quarter note F#3, and a quarter note E3.

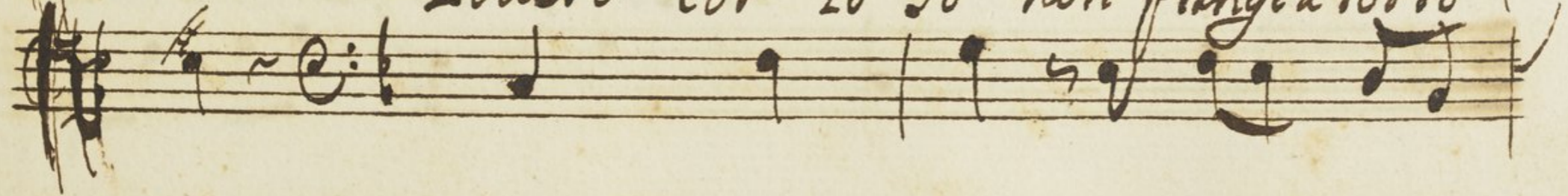




*l'essere tradita e gran dolore*



*Quero cor lo so non piangi a torto*





no lo so, non piangi a torto no po =

= vero come lo so, non piangi a torto



Handwritten musical notation on a five-line staff. The notation includes a treble clef, a key signature of one sharp (F#), and a common time signature (C). The lyrics are written below the notes: "no poue: ro core." The music consists of several measures of notes, including quarter and eighth notes, and rests. The ink is dark and the paper shows signs of age.

Handwritten musical notation on two staves. The notation includes a treble clef, a key signature of one sharp (F#), and a common time signature (C). The music consists of several measures of notes, including quarter and eighth notes, and rests. The ink is dark and the paper shows signs of age. There is a section of the notation that is heavily scribbled over, possibly indicating a correction or a section to be deleted.