

*Cantata a' l'lib*

15

*Aria*

*Sono amante*

*sono a =*

*mante, e mi arde il core, e mi arde il core ma non posso dir per*

649

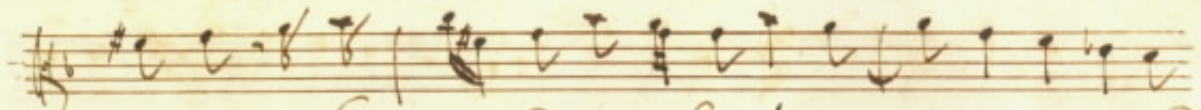
*chi ma non posso ma non posso dir se chi mi trattien degno ti =*

timore d'appro no' d'appro no' dolce si dolce si

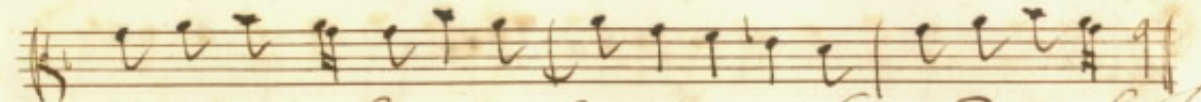
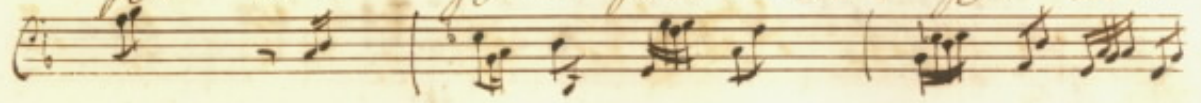
mi trat: tien degno ti = more mi trat: tien degno timore d'appro

no' d'appro no' dolce si dolce si

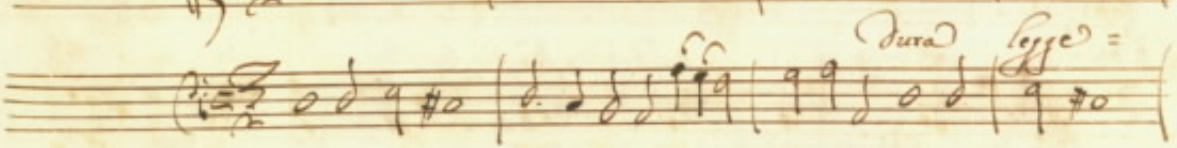
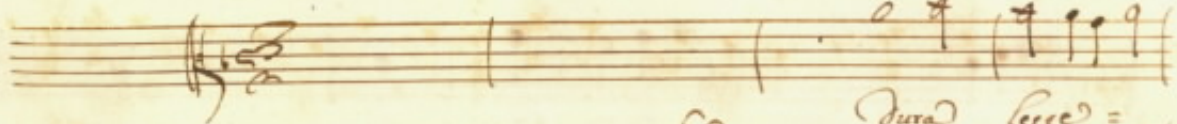
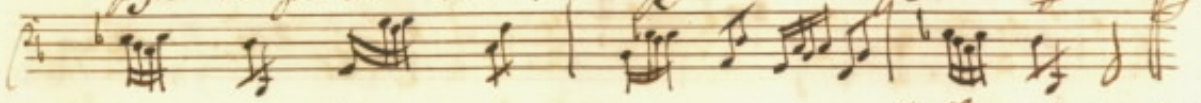
Sono a = mante e mandail core e mandail core ma' no'



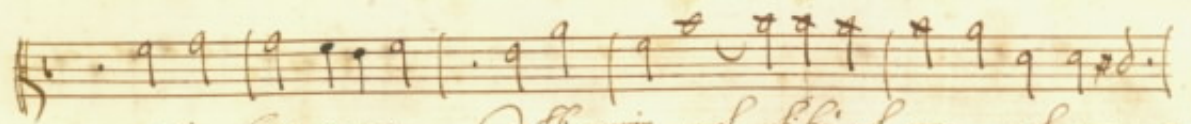
posso ma' no' posso dir per chi ma' non = posso ma' no'



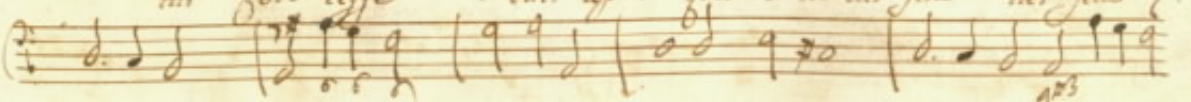
posso dir per chi ma' no' = posso ma' no' posso dir per chi



Dura legge =



mi cor: reffe Dall' apir quel ch' ho' nel seno nel seno



Vàhl' aprire quel ch'io nel seno nel seno Vengo

4/3

me = no for = me = no Vengo me = =

= = no e tacendo hà più forza

13

e tacendo hà più forza il = mio dolo = =

re = = = = *hà più forza*

*il mio dolo*

re *Sono amante*

*e m'ardo il core e m'ardo il core e m'ar = =*

K32

Handwritten musical notation for the first system, consisting of two staves. The top staff is in treble clef with a key signature of one flat and a common time signature. The bottom staff is in bass clef with a key signature of one flat and a common time signature. The music includes various note values and rests.

*Diverge Aria d. No. 6.*

16

*Aria*

Handwritten musical notation for the second system, consisting of six staves. The top two staves are in treble clef with a key signature of one sharp and a 3/8 time signature. The bottom four staves are in bass clef with a key signature of one sharp and a 3/8 time signature. The music includes various note values and rests.

682