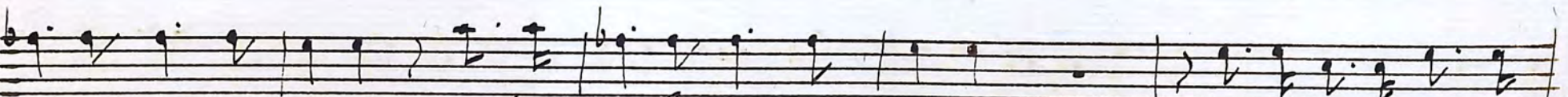
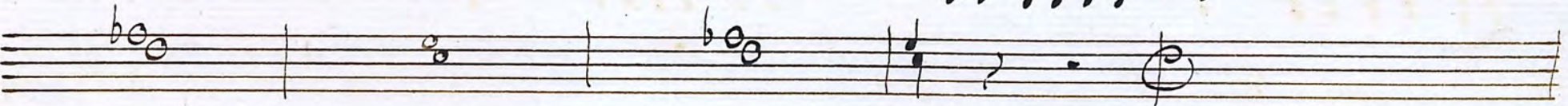
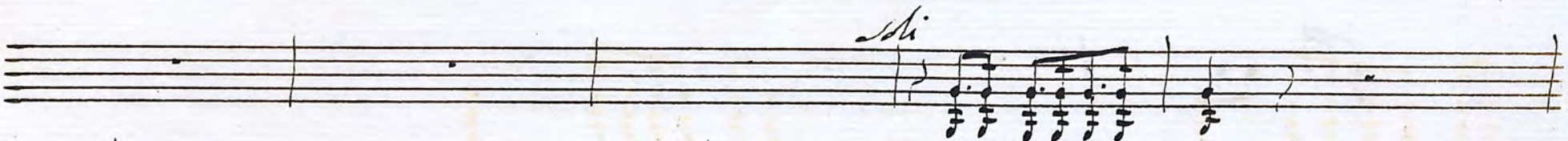
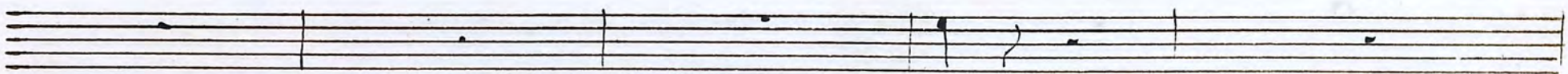
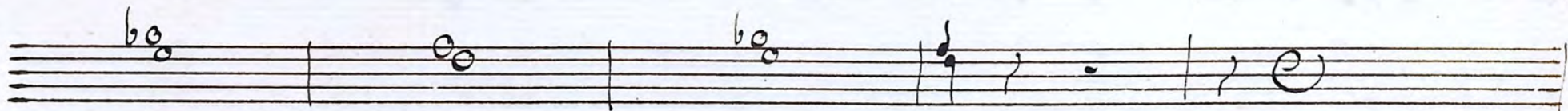
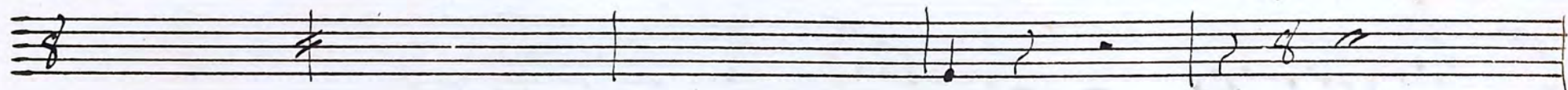
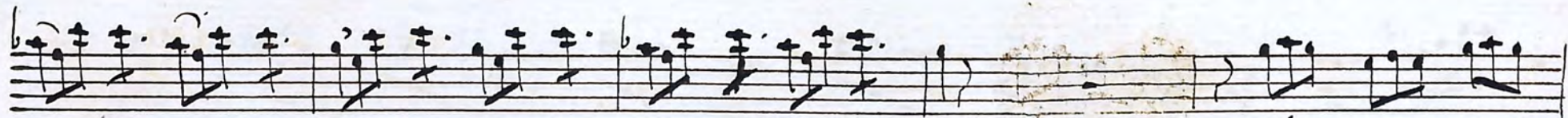
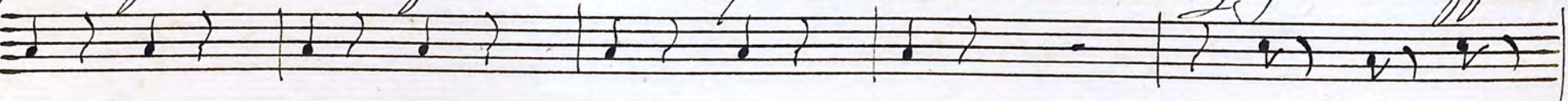


Dino *ma se male si coltiva* *per lo*



Sposo pove: rino spunta un'erba assai cattiva

è quest'erba e appunto



quella e quest'erba, e appunto quella che comune oggi s'app:

Handwritten musical notation on a single staff, featuring complex rhythmic patterns and slurs.

Handwritten musical notation on a single staff, consisting of vertical lines and symbols.

Handwritten musical notation on a single staff, consisting of vertical lines and symbols.

Handwritten musical notation on a single staff, consisting of vertical lines and symbols.

Handwritten musical notation on a single staff, featuring notes with stems and slurs.

Handwritten musical notation on a single staff, consisting of vertical lines and symbols.

Handwritten musical notation on a single staff, featuring notes with stems and slurs.

Handwritten musical notation on a single staff, consisting of vertical lines and symbols.

Handwritten musical notation on a single staff, featuring notes with stems and slurs.

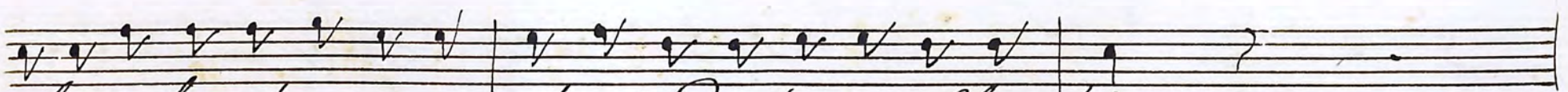
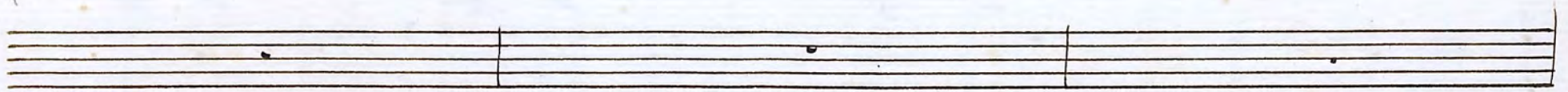
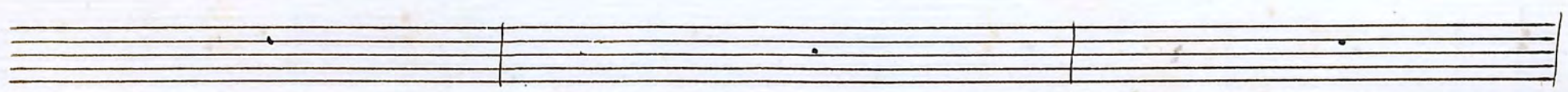
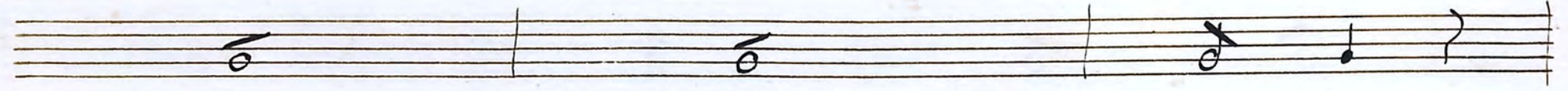
pesta e ve ne gran quanti: fa' si e ve ne gran quanti:

Handwritten musical notation on a single staff, featuring notes with stems and slurs, corresponding to the lyrics above.

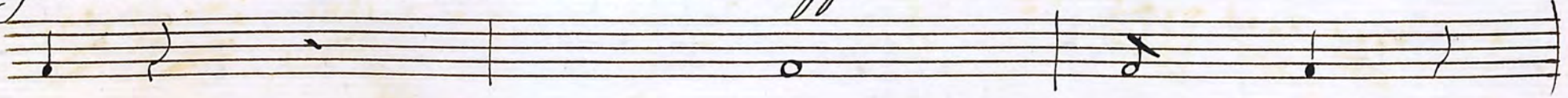
p. Sem.

fa'

La più saviã, e onesta moglie corre dietro alle sue



voglie se il marito scimurrito se da troppa liber: ta'



Sempre a Spasso Sempre in moto

Handwritten musical score for the first part of the piece, consisting of seven staves. The notation includes various notes, rests, and clefs. A sharp sign is present on the first staff, and a double bar line with repeat dots is on the second staff. A treble clef is on the third staff, and a bass clef is on the fourth staff. The music concludes with a double bar line and repeat dots on the seventh staff.

più non pensa alla famiglia *e un vascel senza Pi: loto*

Handwritten musical score for the second part of the piece, consisting of two staves. The first staff contains the lyrics "più non pensa alla famiglia" and "e un vascel senza Pi: loto". The second staff contains the musical notation for these lyrics, including notes, rests, and a "fmo" marking.

e un cavallo senza briglia

Senza briglia Senza

bri: glia *hai ra: gione* *quest'è*

The first part of the handwritten musical score consists of ten staves. The top staff features a melodic line with several slurs and a double bar line. The subsequent staves contain various musical notations, including chords, rests, and rhythmic patterns, typical of a multi-measure rest or a complex accompaniment section. The handwriting is clear and consistent throughout this section.

vero hai ra: gione quest' e vero Sono anch'io del tuo pen:

The second part of the handwritten musical score includes the lyrics "vero hai ra: gione quest' e vero Sono anch'io del tuo pen:" written in a cursive hand. Below the lyrics, there are two staves of musical notation. The first staff shows a melodic line with slurs and accents, while the second staff provides a harmonic accompaniment with chords and rests. The page concludes with a double bar line.

Col Flaut.

Siero convien Darle sogge: zione e te: nerla sempre

Adagio

con la parte

con la parte

la e te: nerla sempre la ma ci vuole discre:

Adagio

All.^o

Handwritten musical score for the first system, consisting of seven staves. The top two staves contain a melodic line with slurs and a dynamic marking 'p' (piano). The third staff contains a bass line with notes and rests. The remaining four staves are empty, with some faint markings at the end of the system.

zione ma ci vuole cari: ta' altri: menti che suc: cede altri:

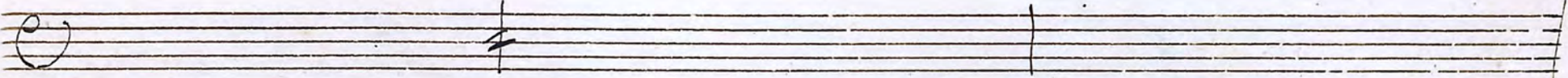
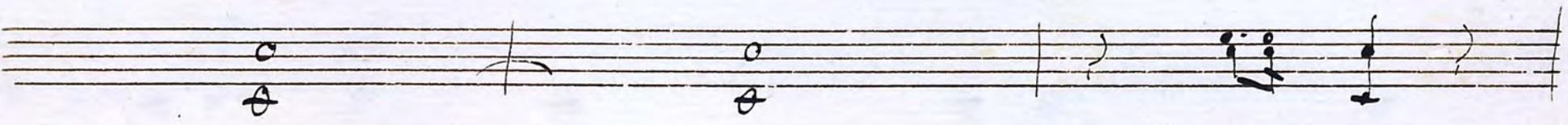
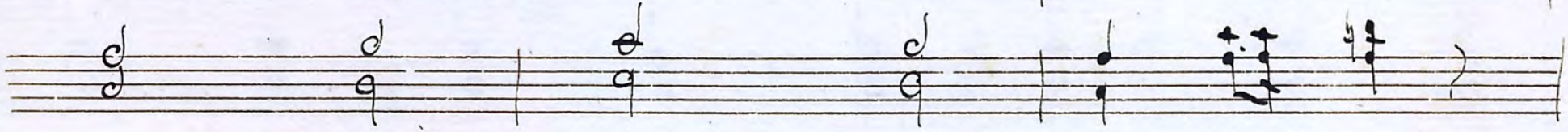
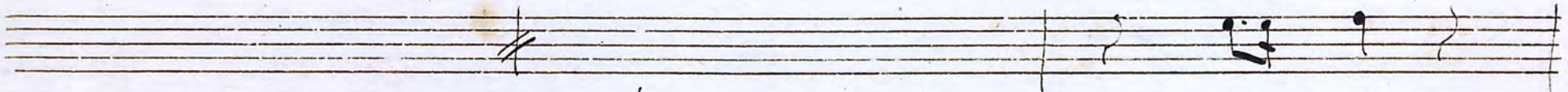
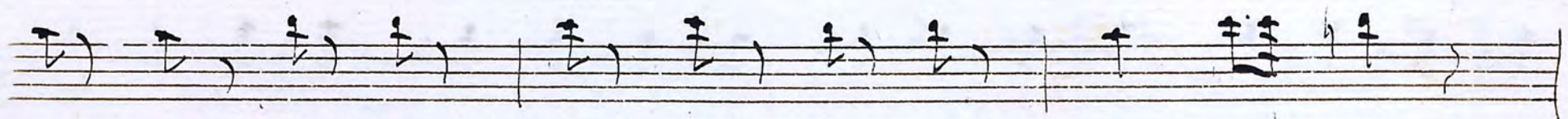
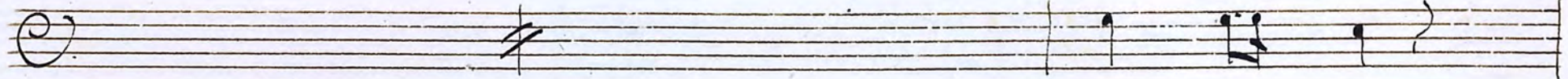
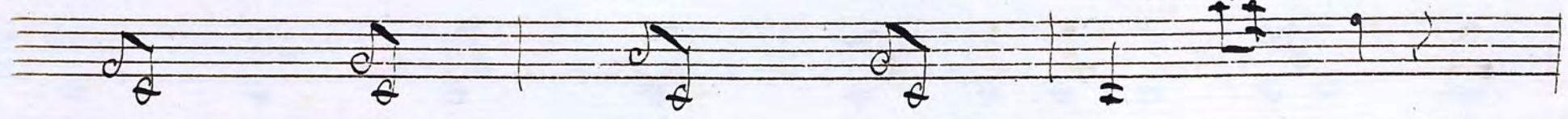
Handwritten musical score for the second system, consisting of two staves. The top staff contains a vocal line with lyrics. The bottom staff contains a bass line with notes and rests. A dynamic marking 'p' (piano) is present at the beginning of the second staff.

menti che suc: cede non si vede

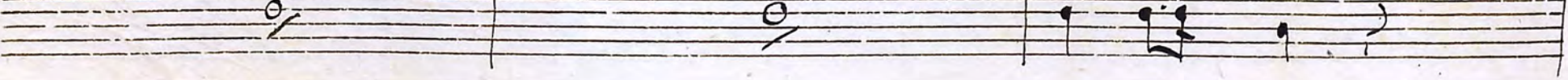
Handwritten musical score consisting of 12 staves. The notation includes various musical symbols such as notes, rests, and clefs. The lyrics "ma' si sa'" are written under the eighth staff.

ma' si sa'

Ella moglie, e un bel giardino male male si coltiva p' lo sposo poverino spunta un'erba amara.



tiva e quest'erba e appunto quella che comune oggi s'appella quest'e



Colla parte

vero hai ragione ma ci vuole discre:

con la parte

All:

zione ma ci vuole cari: fa' altri: menti che suc:

dillo:

Handwritten musical notation for the first system, consisting of two staves. The top staff begins with a treble clef and a key signature of one flat (B-flat). It contains several measures of sixteenth-note runs, followed by a half note chord marked with a dynamic of *ff* (fortissimo). The bottom staff continues with similar rhythmic patterns and a half note chord.

A blank musical staff with a double bar line at the beginning, indicating a section break or the start of a new part.

Handwritten musical notation for the second system, featuring a treble clef, a key signature of one flat, and a half note chord.

Handwritten musical notation for the third system, featuring a treble clef, a key signature of one flat, and a half note chord.

Handwritten musical notation for the fourth system, featuring a treble clef, a key signature of one flat, and a half note chord.

Handwritten musical notation for the fifth system, featuring a treble clef, a key signature of one flat, and a half note chord. The system concludes with a melodic phrase marked *sohi*.

A blank musical staff with a double bar line at the beginning, indicating a section break or the start of a new part.

Handwritten musical notation for the sixth system, featuring a treble clef, a key signature of one flat, and a half note chord.

cedo altri: menti che succede non si vede

Handwritten musical notation for the seventh system, featuring a treble clef, a key signature of one flat, and a half note chord. The lyrics are written below the staff.

Musical staff with piano accompaniment. It features four groups of chords, each marked with the dynamic *fp* (fortissimo piano). The chords are written in a dense, overlapping manner.

Musical staff with piano accompaniment, showing a melodic line and chords.

Musical staff with piano accompaniment, showing a melodic line and chords.

Musical staff with piano accompaniment, showing a melodic line and chords.

Musical staff with piano accompaniment, showing a melodic line and chords.

Musical staff with piano accompaniment, showing a melodic line and chords.

Musical staff with piano accompaniment, showing a melodic line and chords.

Musical staff with piano accompaniment, showing a melodic line and chords.

ma si sa non si vede ma si

Musical staff with lyrics and piano accompaniment. The lyrics are "ma si sa non si vede ma si". The accompaniment includes dynamic markings *fp*.

Musical staff with piano accompaniment, showing a melodic line and chords.

Handwritten musical score for the first part of the piece, consisting of ten staves. The notation includes complex chords, triplets, and various rhythmic values. A dynamic marking 'f' is present at the beginning, and 'p' appears later. The music is written in a single system.

Si

Sa' non si vede ma si sa' ma si sa' ma si sa' ma si

Handwritten musical score for the second part of the piece, consisting of two staves. The first staff contains the vocal line with lyrics, and the second staff contains the piano accompaniment. The lyrics are "Sa' non si vede ma si sa' ma si sa' ma si sa' ma si".

f. Semp

Sa non si vede ma si sa

A handwritten musical score consisting of ten staves. The notation includes various musical symbols such as notes, rests, and clefs. The first staff begins with a treble clef and a common time signature. The second staff starts with a bass clef. The third staff begins with a treble clef and a common time signature. The fourth staff starts with a treble clef. The fifth staff begins with a treble clef. The sixth staff starts with a treble clef. The seventh staff begins with a treble clef. The eighth staff starts with a treble clef. The ninth staff begins with a treble clef. The tenth staff starts with a treble clef. The notation is dense and appears to be a single melodic line or a simple harmonic setting. There are some corrections and erasures visible in the handwriting.

March.

Marchese

Solo

Dopo quel che sostenne la mia Grisetta, il tormentarla ancor in:

vero e crudelta' ma vuol far tanto che l'altiera Duchessa di è così contro

lei fiera e ostinata la riconosca alfin *ff* sua Cognata

Segue Scena III. e

Carolina Grisetta

Violini

Viola

Flautino in B[♭]

Oboe

Corni

Fagotto

Clarineta

Aut. Capres. con flauto

178

This image shows a handwritten musical score for a piece numbered 178. The score is written on ten staves. The first three staves contain a melodic line with various note values, rests, and slurs. The next five staves are mostly empty, with only a few scattered notes. The final two staves contain a bass line with notes and rests. The paper shows signs of age, including some staining and discoloration.

Handwritten musical notation on a single staff, featuring a series of chords and melodic lines. Includes dynamic markings such as *f* and *p*.

Handwritten musical notation on a single staff, continuing the piece with various rhythmic patterns and melodic fragments.

Handwritten musical notation on a single staff, showing a sequence of notes and rests, ending with a circled note.

Handwritten musical notation on a single staff, featuring a *solo* marking and a final chord.

Handwritten musical notation on a single staff, consisting of a series of notes and rests.

Handwritten musical notation on a single staff, showing a sequence of notes and rests.

Handwritten musical notation on a single staff, featuring a circled note and a sharp sign.

Handwritten musical notation on a single staff, which is mostly blank with some faint lines.

Handwritten musical notation on a single staff, featuring a series of notes and rests, with dynamic markings *f* and *p*.

Two empty musical staves at the bottom of the page.

Handwritten musical score on ten staves. The notation includes various notes, rests, and dynamic markings such as 'f' and 'z'. The score is arranged in two systems of five staves each. The first system contains the most detailed notation, including a complex sixteenth-note passage in the fifth staff. The second system is mostly empty, with only a few notes in the bottom staff.

Voi d'a: man:to dolci af: fetti che mi sta: te intorno al

Handwritten musical score consisting of ten staves. The notation includes various rhythmic values, slurs, and dynamic markings such as *ff* and *p*. The bottom two staves contain the lyrics: *CORO* and *non sive: Sa = te il*.

mio Do = lo = re non Sve: late il mio Do. lo: re Dek ta:

ce: te) deh ta: ceter ta: ceter pieta'

Handwritten musical notation for the first system, featuring complex rhythmic patterns and dynamic markings like 'pp' and 'f'.

Handwritten musical notation for the second system, including a large 'C' time signature and a sharp sign.

Handwritten musical notation for the third system, showing a series of notes and rests.

Handwritten musical notation for the fourth system, showing a series of notes and rests.

Handwritten musical notation for the fifth system, showing a series of notes and rests.

Handwritten musical notation for the sixth system, showing a series of notes and rests.

Il Do: ver Di: fi = ta Sposa

Handwritten musical notation for the seventh system, featuring a vocal line with lyrics.

Handwritten musical notation for the eighth system, showing a series of notes and rests.

Handwritten musical notation for the ninth system, showing a series of notes and rests.

parli solo in questo Seno parli solo in questo Seno ah ri:

Handwritten musical notation on a single staff, featuring quarter notes and rests with stems.

Handwritten musical notation on a single staff, featuring eighth notes and quarter notes.

Handwritten musical notation on a single staff, starting with a treble clef and a sharp sign.

Handwritten musical notation on a single staff, showing a whole note.

Handwritten musical notation on a single staff, showing a whole note.

Handwritten musical notation on a single staff, showing a whole note.

Handwritten musical notation on a single staff, starting with a treble clef and a sharp sign.

= torni al core al = meno de ri: torni al core al:

Handwritten musical notation on a single staff, featuring quarter notes and rests.

Empty musical staves at the bottom of the page.

meno quella pace che non ha

Stac

che non sia quella pace

14

Detailed description: This is a handwritten musical score on aged paper. It consists of several systems of staves. The first system has three staves with rhythmic notation and slurs. The second system has three staves with notes and rests. The third system has three staves, with the bottom staff containing the lyrics 'che non sia quella pace' written in cursive. The notation includes various note values, rests, and dynamic markings like 'Stac' and 'f'. There are also some double bar lines and a circled 'C' at the beginning of a section.

Handwritten musical score for the first system, consisting of six staves. The notation includes various rhythmic values, slurs, and dynamic markings. The first two staves appear to be vocal lines, while the remaining four are instrumental accompaniment.

che non ha quella pace *che non ha*

Handwritten musical score for the second system, consisting of two staves. The first staff contains the vocal line with lyrics "che non ha quella pace" and "che non ha". The second staff is the instrumental accompaniment. The lyrics are written in a cursive, handwritten style.

A handwritten musical score consisting of ten staves. The notation includes various rhythmic values such as eighth and sixteenth notes, as well as rests. The first staff begins with a treble clef and a key signature of one flat. The second staff contains a double bar line with repeat dots. The third staff features a triplet of eighth notes, indicated by a '3' below the notes. The fourth staff includes a triplet of sixteenth notes, marked with a '3' above the notes. The fifth staff shows a complex chordal structure with multiple notes beamed together. The sixth staff continues with similar complex chordal patterns. The seventh staff is mostly empty, with a double bar line and repeat dots. The eighth staff is also mostly empty, with a double bar line and repeat dots. The ninth staff contains a few notes and rests. The tenth staff is empty.

9/8

Gian.

Grifelda
Giann., e
Lefbino

Oh senti figlia in verità son stacco di
 Star in questa casa, e di por: tar questa zimarra indosso il mio panno, e più
 grosso ma pesa assai men più crudelmente teco tratta il ma:
 rito a te si caro che non fa con la bestia un mulinaro
 tu sei mia figlia alfin pte fin ora ho sofferto ho ta: ciuto simula =

to or non ne posso piu' l'ami tuo Padre, se te cara la

pelle meco ri: torna a pascolar le agnelle *Grij.* Padre

se mi vuoi bene rispetta il mio do: ver; non obbligarmi Di

tanta mia costanza a perder tutto il frutto in un momento che *Gian.*

bile che mi fa' crepar mi sento *Lesb.* affè Griselda

questa costanza e omai stupidità forse sperate a forza di sof:

frire in-sulti e offese di riacquistar l'affetto del mar:

Gris.
che se l'ebino amar lo sposo, e se gli fida rispet:

tar le sue leggi, i suoi difetti soffrir tacendo, e rispettar sue

Gian.
voglie e il dover di Griselda, e d'una moglie oh che

Moglie, ah che figlia? pove: rina val più questa che d'altre

una Doz: zina

Segue Terzetto

Adagio

Sarcello

197

10.
3.

Violini *f*

Viote *mf*

Oboe

Corni in *f*

Fagotto

Fifelella

Lesbino

Ciannuc.

Alleg^{ro} *f*

Quel che piace a

pp.

pp.

Handwritten musical notation on a single staff, featuring various rhythmic values and accidentals.

Handwritten musical notation on a single staff, consisting of five vertical stems with flags.

Handwritten musical notation on a single staff, consisting of five vertical stems with flags.

Handwritten musical notation on a single staff, consisting of five vertical stems with flags.

Handwritten musical notation on a single staff, consisting of five vertical stems with flags.

Handwritten musical notation on a single staff, consisting of five vertical stems with flags.

Handwritten musical notation on a single staff with lyrics: *mio ma: rito a me sempre ha da pia:*

Handwritten musical notation on a single staff, consisting of five vertical stems with flags.

Handwritten musical notation on a single staff, consisting of five vertical stems with flags.

Handwritten musical notation on a single staff, consisting of five vertical stems with flags.

Handwritten musical notation on a single staff, featuring complex chords and melodic lines with slurs and accidentals.

Handwritten musical notation on a single staff, showing a sequence of notes with stems and beams.

Handwritten musical notation on a single staff, including a treble clef and a key signature of one sharp.

Handwritten musical notation on a single staff, consisting of a series of dotted notes.

Handwritten musical notation on a single staff, consisting of a series of dotted notes.

Handwritten musical notation on a single staff, including a treble clef and a key signature of one sharp.

Handwritten musical notation on a single staff with lyrics written below the notes.

Handwritten musical notation on a single staff, consisting of a series of dotted notes.

Handwritten musical notation on a single staff, consisting of a series of dotted notes.

Handwritten musical notation on a single staff, including a treble clef and a key signature of one sharp.

cer da me sempre ha da piacer da me sempre ha