

Dessus

Michel Pignolet de Montéclair

La Mort de Didon

La Mort de Didon

Montéclair

Lent, marqué et détaché

4

7

10

14

18

Je ne ver-rai donc plus — Ae-né-e! S'é-cri-a tris-te ment Di-don a-ban-do-

Detailed description: The image shows a musical score for the piece 'La Mort de Didon' by Montéclair. It is written for a soprano (Dessus) and a keyboard instrument. The tempo is 'Lent, marqué et détaché'. The score is in common time (C) and consists of six systems of music. The first system contains the first four measures. The second system contains measures 4 through 7. The third system contains measures 7 through 10. The fourth system contains measures 10 through 14. The fifth system contains measures 14 through 18. The sixth system contains measures 18 through 21 and includes the French lyrics: 'Je ne ver-rai donc plus — Ae-né-e! S'é-cri-a tris-te ment Di-don a-ban-do-'. The vocal line is written in a treble clef, and the keyboard accompaniment is written in a grand staff (treble and bass clefs). The music features a variety of note values, including quarter, eighth, and sixteenth notes, as well as rests and accidentals. There are several fermatas and dynamic markings throughout the piece.

22

né - e, Il est donc vrai qu'il part? il fuit loin de ces

24

bords, Dieux, que j'e-tois cre-du-le! ô Dieux qu'il est per-fi - de!

27

l'in-con-stant plus le - ger que le vent qui le gui - de me

29

quit-te sans re - grets, me tra-hit sans re-mords.

31

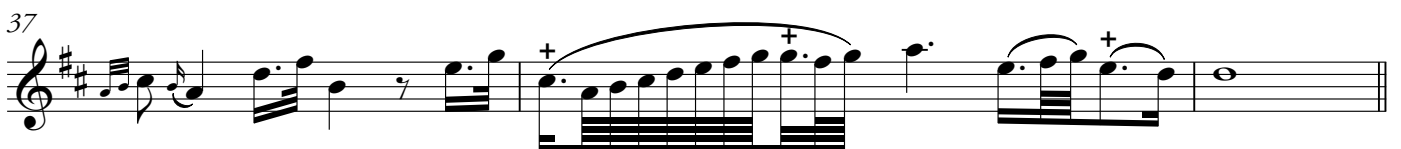
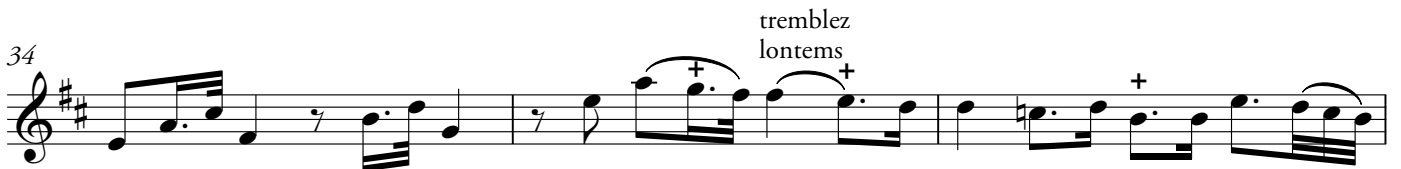
quit-te sans re - grets, me tra-hit sans re-mords.

34

quit-te sans re - grets, me tra-hit sans re-mords.

Lent

1 Flute traversiere ou Violon



1

7

9 **Lentement**

Animez
3

faut-il que je trouve un volage dans le frere du tendre Amour?

1 **Vivement**

4

9

13

16 *doux fort doux fort*

20

23

27

31

35

38



41



44



47



1

Non, ar - re - tez, Grands Dieux, gar - dez vous d'ex - au - cer mon cou-roux le - gi -

3

ti - me. Lais - sez moi choi - sir ma vic - ti - me. E - née est dans mon cœur et je vais l'y per - cer.

7

Sur un bu - cher fa - tal, té - a - tre de sa ra - ge, Di - don en ce mo - ment se livre à la fu -

9

reur. Un fer, tris-te pré-sent que lui laisse un vo-la-ge, un fer cru-el lui perce en-fin le cœur.

13

Mou-rante, el-le tombe et son â-me chère-rit en-cor l'In-grat qu'el-le n'a pu tou-cher. Elle ex-

16

pi-re sur le bû-cher. Le flam-beau de l'A-mour en-a-lu-me la fla-me.

Air gay

9

17

25

fin

30

13