

Tous Les Airs de Violon
de L'Opera D'Amadis
Composez par Monsieur
de Lully, Escuier,
Conseiller Secretaire,
du Roy. &

Imprimé a Amsterdam.
par Antoine Poutel.

Vault
M
1505
L956

Hauteconté de Violon,

756781

J.

Ouverture,

Handwritten musical score for 'Hauteconté de Violon' Overture. The score consists of six staves of music. The first staff begins with a treble clef, a key signature of one flat (B-flat), and a 2/4 time signature. The music is written in a single melodic line. The second staff contains a repeat sign and a first ending bracket. The third staff includes several measures with a '+' sign above the notes. The fourth staff continues the melodic line with '+' signs. The fifth staff also features '+' signs. The sixth staff concludes the piece with a double bar line and a fermata over the final note.

12/13/60 Scientific Library Service \$28.00

2.
Air

Handwritten musical score for 'Air'. The piece is in 2/4 time and B-flat major. It consists of five staves of music. The notation includes a treble clef, a key signature of one flat, and a time signature of 2/4. The melody is written on the upper staff, and the bass line is on the lower staff. There are several measures with a '+' sign above the notes, indicating fingerings. The piece ends with a double bar line and a repeat sign.

Gigue

Handwritten musical score for 'Gigue'. The piece is in 6/4 time and B-flat major. It consists of three staves of music. The notation includes a treble clef, a key signature of one flat, and a time signature of 6/4. The melody is written on the upper staff, and the bass line is on the lower staff. There are several measures with a '+' sign above the notes, indicating fingerings. The piece ends with a double bar line and a repeat sign.

Handwritten musical notation on a five-line staff. It begins with a treble clef, a key signature of one flat (B-flat), and a common time signature (C). The melody consists of quarter and eighth notes, with several notes marked with a '+' sign above them. The piece concludes with a double bar line and a fermata. A small number '3' is written in the upper right corner of the staff.

Handwritten musical notation on a five-line staff, continuing the melody from the first staff. It features a treble clef, a key signature of one flat, and a common time signature. The notation includes quarter and eighth notes, with '+' signs above several notes.

Handwritten musical notation on a five-line staff, concluding the first section. It starts with a treble clef, a key signature of one flat, and a common time signature. The melody ends with a double bar line and a fermata.

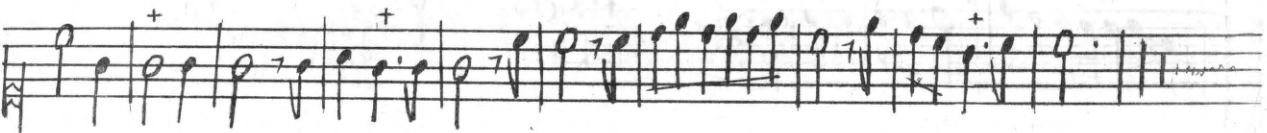
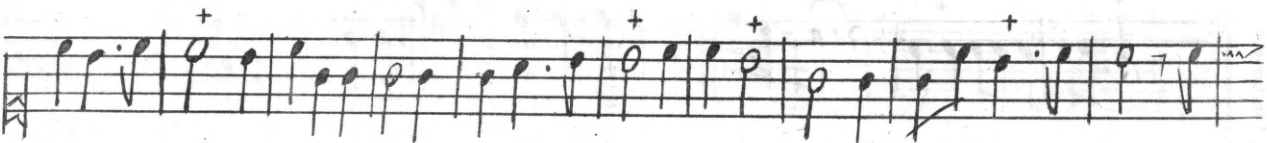
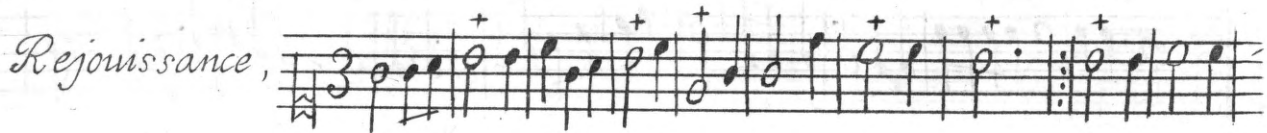
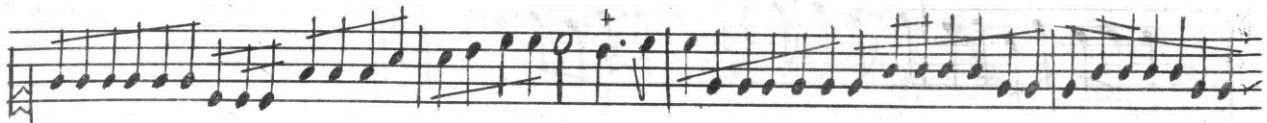
Trio,

4
Marche,

Handwritten musical notation for the first part of the piece, consisting of five staves. The first staff has a '2' above it. The second staff starts with 'fin.' and a '+' sign. The notation includes various note values, rests, and dynamic markings like 's.' and '+'.

les
Combatans

Handwritten musical notation for the second part of the piece, consisting of three staves. The first staff has a '6' above it and a '4' below it. The notation includes various note values, rests, and dynamic markings like '+'.



Prelude,

Prelude,

viste.

Prelude

Chœur,

Mémoriet,

8.
Centrez,
1. Air,

Handwritten musical notation for the first system of 'Centrez, 1. Air'. It consists of two staves. The first staff begins with a treble clef, a key signature of one sharp (F#), and a time signature of 2/4. The music features a series of eighth and sixteenth notes, with several measures containing a '+' sign above the notes. The second staff continues the melody with similar rhythmic patterns and includes a repeat sign with first and second endings.

Handwritten musical notation for the second system of 'Centrez, 1. Air'. It consists of two staves. The first staff continues the melody from the previous system, featuring eighth and sixteenth notes and '+' signs. The second staff includes a repeat sign and first and second endings.

Handwritten musical notation for the third system of 'Centrez, 1. Air'. It consists of two staves. The first staff continues the melody with eighth and sixteenth notes and '+' signs. The second staff includes a repeat sign and first and second endings.

2.
Air,

Handwritten musical notation for the first system of '2. Air'. It consists of two staves. The first staff begins with a treble clef, a key signature of one sharp (F#), and a time signature of 3/4. The music features a series of eighth and sixteenth notes, with several measures containing a '+' sign above the notes. The second staff continues the melody with similar rhythmic patterns and includes a repeat sign with first and second endings.

Handwritten musical notation for the second system of '2. Air'. It consists of two staves. The first staff continues the melody from the previous system, featuring eighth and sixteenth notes and '+' signs. The second staff includes a repeat sign and first and second endings.

Handwritten musical notation for the third system of '2. Air'. It consists of two staves. The first staff continues the melody with eighth and sixteenth notes and '+' signs. The second staff includes a repeat sign and first and second endings.

Air, $\sharp\sharp$ 2

Menuet, $\sharp\sharp$ 3/4

Gavotte, $\sharp\sharp$

10

Rondeau

Handwritten musical score for 'Rondeau'. The piece is in 3/4 time and G major. It consists of five staves of music. The notation includes treble clefs, a key signature of one sharp (F#), and a 3/4 time signature. The music features a variety of note values, including eighth and sixteenth notes, and rests. There are several trill ornaments marked with a '+' sign above the notes. The score concludes with a double bar line and a repeat sign.

Menuet

Handwritten musical score for 'Menuet'. The piece is in 3/4 time and G major. It consists of two staves of music. The notation includes treble clefs, a key signature of one sharp (F#), and a 3/4 time signature. The music features a variety of note values, including eighth and sixteenth notes, and rests. There are several trill ornaments marked with a '+' sign above the notes. The score concludes with a double bar line and a repeat sign.

Bourée

Handwritten musical score for 'Bourée'. The piece is in 3/4 time and G major. It consists of one staff of music. The notation includes a treble clef, a key signature of one sharp (F#), and a 3/4 time signature. The music features a variety of note values, including eighth and sixteenth notes, and rests. There are several trill ornaments marked with a '+' sign above the notes. The score concludes with a double bar line and a repeat sign.

Air,

Trio,

Menuet,

Handwritten musical notation for a Minuet in 3/4 time, consisting of three staves. The notation includes treble clefs, a 3/4 time signature, and various musical symbols such as notes, rests, and bar lines. There are several plus signs (+) above the notes in the first two staves, and a double bar line with repeat dots at the end of the third staff.

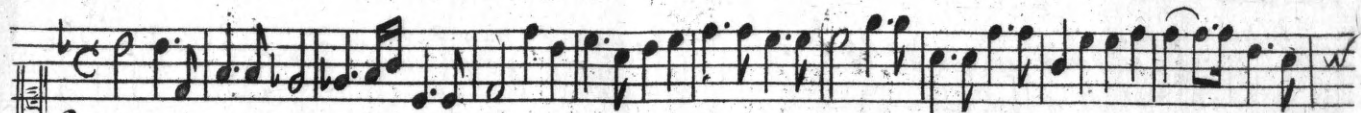
Prelude

viste

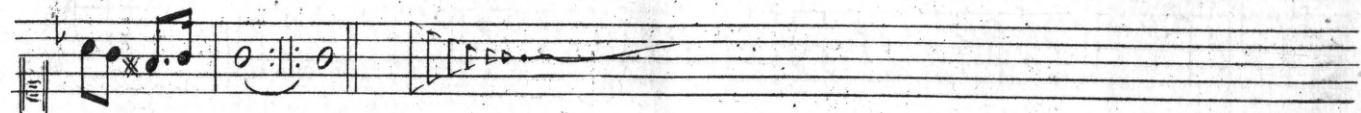
Handwritten musical notation for a Prelude in C major, consisting of six staves. The notation includes a treble clef, a common time signature (C), and various musical symbols such as notes, rests, and bar lines. There are several plus signs (+) above the notes in the second, third, fourth, and fifth staves, and a double bar line with repeat dots at the end of the sixth staff.

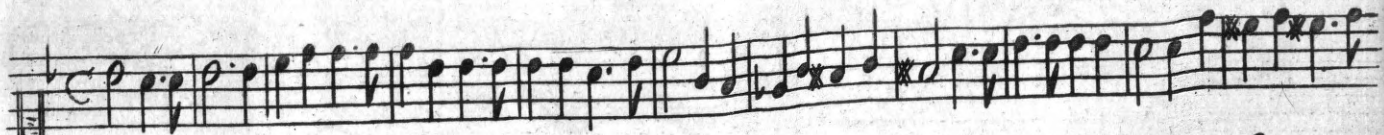
La Grande
Chaconne
D'Amadis,

A handwritten musical score for a piece titled "La Grande Chaconne D'Amadis". The score is written on ten staves, organized into five systems of two staves each. The notation is in a single system, likely for a single melodic instrument. The music is written in a 3/4 time signature and features a complex, rhythmic pattern of eighth and sixteenth notes, with frequent rests and dynamic markings. The key signature is one flat (B-flat). The score is divided into two systems by a vertical line. The notation includes various musical symbols such as clefs, time signatures, and dynamic markings like "p" and "f". The handwriting is clear and legible, typical of a composer's manuscript.



Ouverture à Amadis

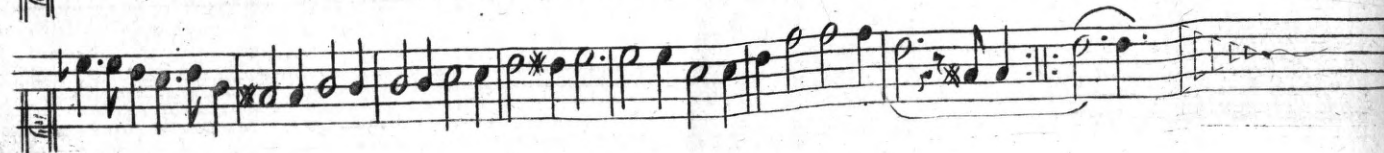
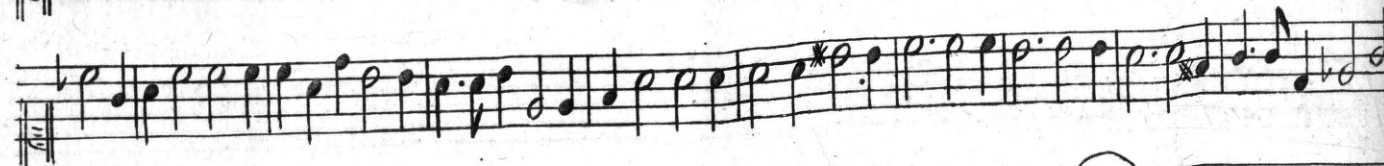
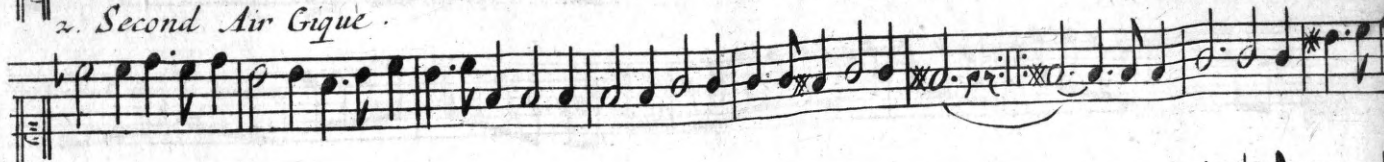


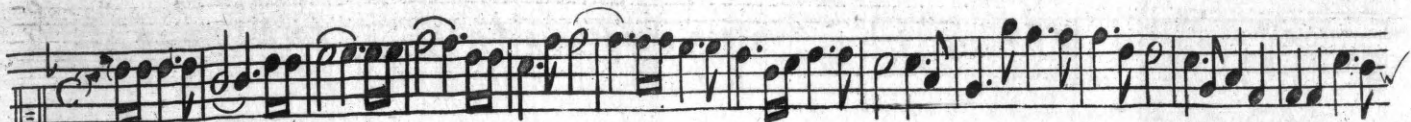


1. Premier Air.

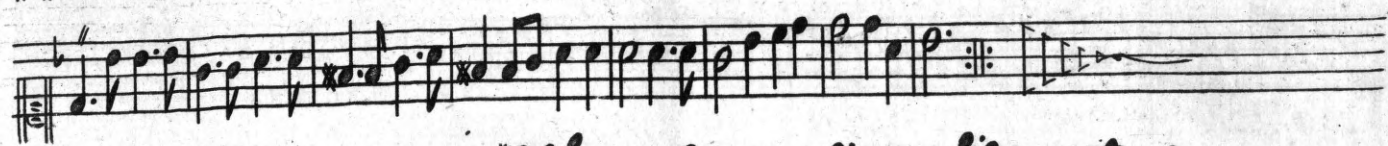
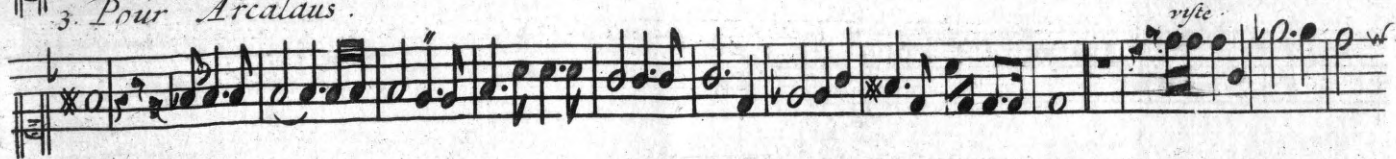


2. Second Air Gigue.





3. Pour Arcalaus.



4. Pour les violons.



Handwritten musical notation on a single staff, featuring a treble clef, a key signature of one sharp (F#), and a 3/4 time signature. The piece begins with a treble clef and a 3/4 time signature. The notation includes eighth and sixteenth notes, rests, and a repeat sign with first and second endings. The piece concludes with a double bar line and a fermata.

5. Menuet.

Handwritten musical notation on a single staff, featuring a treble clef, a key signature of one sharp (F#), and a 3/4 time signature. The notation includes eighth and sixteenth notes, rests, and a repeat sign with first and second endings. The piece concludes with a double bar line and a fermata.

Handwritten musical notation on a single staff, featuring a treble clef, a key signature of one sharp (F#), and a 3/4 time signature. The notation includes eighth and sixteenth notes, rests, and a repeat sign with first and second endings. The piece concludes with a double bar line and a fermata.

Handwritten musical notation on a single staff, featuring a treble clef, a key signature of one sharp (F#), and a 3/4 time signature. The notation includes eighth and sixteenth notes, rests, and a repeat sign with first and second endings. The piece concludes with a double bar line and a fermata.

6. Prelude.

Handwritten musical notation on a single staff, featuring a treble clef, a key signature of one sharp (F#), and a 3/4 time signature. The notation includes eighth and sixteenth notes, rests, and a repeat sign with first and second endings. The piece concludes with a double bar line and a fermata. The word *fin.* is written above the final measure.

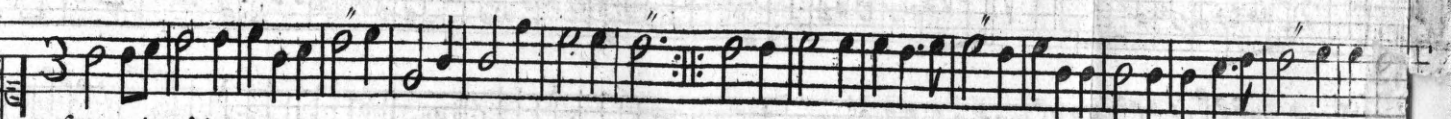
7. Marche.

Handwritten musical notation on a single staff, featuring a treble clef, a key signature of one sharp (F#), and a 3/4 time signature. The notation includes eighth and sixteenth notes, rests, and a repeat sign with first and second endings. The piece concludes with a double bar line and a fermata.

Handwritten musical notation on a single staff, featuring a treble clef, a key signature of one sharp (F#), and a 3/4 time signature. The notation includes eighth and sixteenth notes, rests, and a repeat sign with first and second endings. The piece concludes with a double bar line and a fermata.



8. Premier les Combattans



9. Second Air.



3rd
La Grande Chaconne.

A handwritten musical score for a piece titled "La Grande Chaconne". The score is written on ten staves of five-line music paper. The notation is in black ink and includes various musical symbols such as notes, rests, accidentals, and dynamic markings. The first staff begins with a treble clef and a 3/4 time signature. The music is characterized by a steady, rhythmic pattern of eighth and sixteenth notes, typical of a chaconne. There are several measures with a double bar line and repeat signs, indicating sections to be repeated. The paper shows signs of age, with some staining and wear, particularly along the left edge where the binding holes are visible.

A handwritten musical score consisting of ten staves. The notation is dense and includes various rhythmic values, accidentals, and dynamic markings. The first staff begins with a treble clef and a key signature of one flat. The music is written in a style characteristic of 18th or 19th-century manuscript notation. The staves are numbered 1 through 10 on the left margin. The notation includes eighth and sixteenth notes, rests, and various accidentals such as flats and naturals. Some notes have slurs or accents above them. The piece concludes with a double bar line and a fermata on the final note of the tenth staff.

31. Prelude.

31ste.

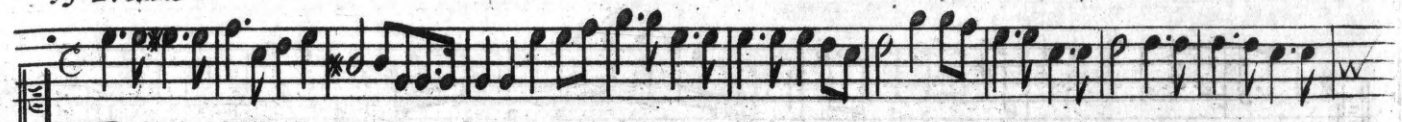
32. Prelude.

33. Prelude.

34. Prelude.



15. Prelude.



16. Premier air.



Premier reprise.



Second reprise.

a. repr. 2. repr.



17. Second air.



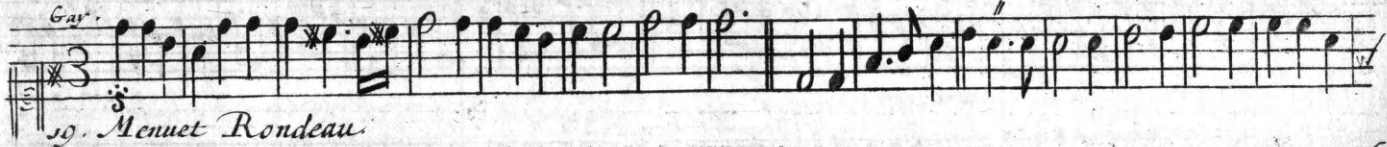
rite.



18. *Air pour les demons.*



Gay.



19. *Menuet Rondeau.*



20. Menuet.

Handwritten musical notation for a minuet. The staff begins with a treble clef, a key signature of one sharp (F#), and a 3/4 time signature. The melody consists of eighth and sixteenth notes, with several measures marked with a double bar line and repeat dots. The piece concludes with a double bar line and a repeat sign.

21. Choeur.

Handwritten musical notation for a chorus. The staff begins with a treble clef, a key signature of one sharp (F#), and a 3/4 time signature. The melody is characterized by a series of sixteenth-note runs and eighth-note patterns. It includes repeat signs and ends with a double bar line and a repeat sign.

22. Prelude.

Handwritten musical notation for a prelude. The staff begins with a treble clef, a key signature of one sharp (F#), and a common time (C) signature. The melody features a mix of eighth and sixteenth notes, with some measures containing rests. It concludes with a double bar line and a repeat sign.

Handwritten musical notation for the prelude, continuing from the previous block. The staff begins with a treble clef, a key signature of one sharp (F#), and a common time (C) signature. The melody continues with eighth and sixteenth notes, ending with a double bar line and a repeat sign.

Handwritten musical notation for the prelude, continuing from the previous block. The staff begins with a treble clef, a key signature of one sharp (F#), and a common time (C) signature. The melody continues with eighth and sixteenth notes, ending with a double bar line and a repeat sign.

Handwritten musical notation for the prelude, continuing from the previous block. The staff begins with a treble clef, a key signature of one sharp (F#), and a common time (C) signature. The melody continues with eighth and sixteenth notes, ending with a double bar line and a repeat sign.

Handwritten musical notation for the prelude, continuing from the previous block. The staff begins with a treble clef, a key signature of one sharp (F#), and a common time (C) signature. The melody continues with eighth and sixteenth notes, ending with a double bar line and a repeat sign.

23 *Menuet.*

This musical system consists of two staves. The upper staff is in treble clef with a 3/4 time signature. It begins with a key signature of one sharp (F#) and contains a melody with various note values, including quarter and eighth notes, and rests. A repeat sign is present in the middle of the piece. The lower staff is in bass clef and contains a bass line with similar note values and rests. The piece concludes with a double bar line and a fermata.

This system shows the continuation of the bass line from the previous system. It features a series of quarter and eighth notes, leading to a repeat sign and ending with a fermata.

24 *Menuet.*

This system consists of two staves. The upper staff is in treble clef with a 3/4 time signature. It begins with a key signature of one sharp (F#) and contains a melody with various note values, including quarter and eighth notes, and rests. A repeat sign is present in the middle of the piece. The lower staff is in bass clef and contains a bass line with similar note values and rests. The piece concludes with a double bar line and a fermata.

This system shows the continuation of the bass line from the previous system. It features a series of quarter and eighth notes, leading to a repeat sign and ending with a fermata.

25 *Prelude.*

This system consists of two staves. The upper staff is in treble clef with a common time signature (C). It begins with a key signature of one sharp (F#) and contains a melody with various note values, including quarter and eighth notes, and rests. A repeat sign is present in the middle of the piece. The lower staff is in bass clef and contains a bass line with similar note values and rests. The piece concludes with a double bar line and a fermata.

This system shows the continuation of the bass line from the previous system. It features a series of quarter and eighth notes, leading to a repeat sign and ending with a fermata.

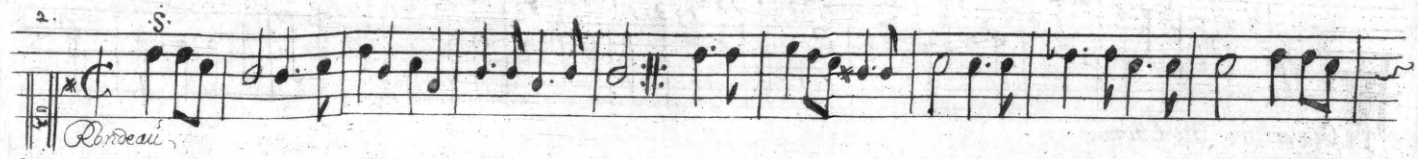
This system shows the continuation of the bass line from the previous system. It features a series of quarter and eighth notes, leading to a repeat sign and ending with a fermata.

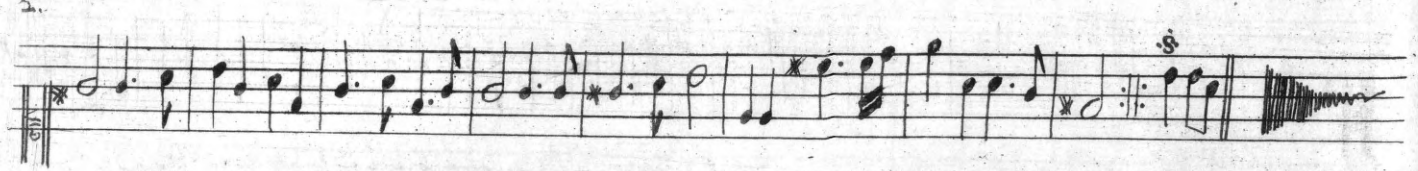
HAVTE-CONTRE.

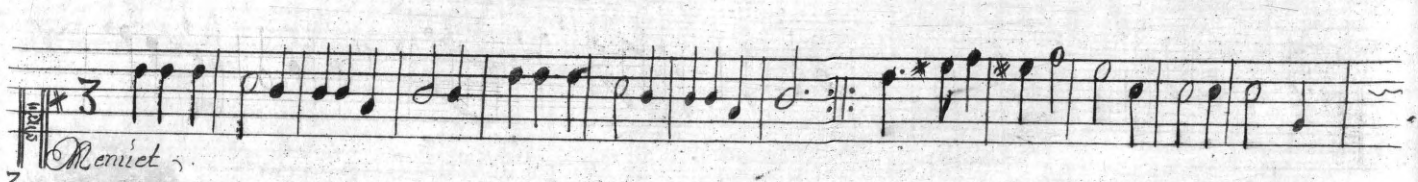
31

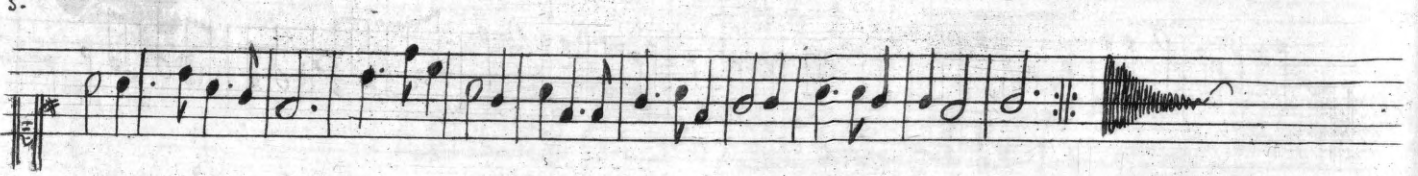
Ouverture du Cadmus.

756761

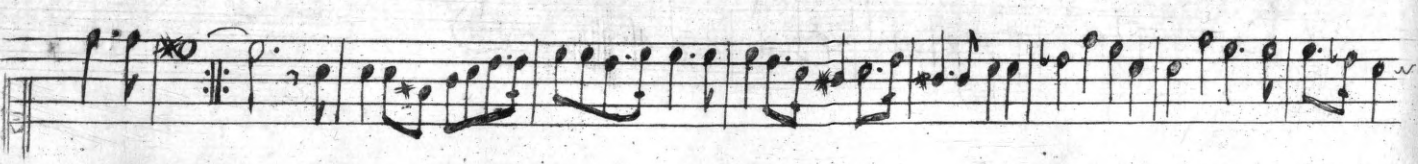
2. *S.*
* 
Rondeau



* 3

Menuet

3.



Les Satiras



5

Doir les mesmes.

6

Meniet

756761

Handwritten musical notation for the first system of a piece titled "Prelude". The notation is on a single staff with a treble clef and a common time signature (C). The music consists of a sequence of notes, including quarter notes, eighth notes, and sixteenth notes, with some accidentals (sharps and naturals). The piece concludes with a double bar line and a wavy line indicating the end.

Handwritten musical notation for the second system of the piece. It continues the melodic line from the first system, featuring similar rhythmic patterns and accidentals. The system ends with a double bar line and a wavy line.

Handwritten musical notation for the third system of the piece. This system concludes the "Prelude" section with a double bar line, a wavy line, and a decorative flourish.

Handwritten musical notation for the first system of a piece titled "Menuet". The notation is on a single staff with a treble clef and a 3/4 time signature. The music begins with a quarter rest followed by a series of notes, including quarter notes and eighth notes, with various accidentals. The system ends with a double bar line and a wavy line.

Handwritten musical notation for the second system of the piece. It continues the melodic line from the first system, ending with a double bar line, a wavy line, and a decorative flourish.

Handwritten musical notation for the first staff of the piece. It begins with a treble clef and a common time signature. The melody consists of eighth and sixteenth notes, with a repeat sign and a first ending bracket. The title "Marche des Puffrain" is written in cursive below the staff.

Marche des Puffrain

Handwritten musical notation for the second staff of the piece. It continues the melody with various rhythmic patterns, including sixteenth-note runs and eighth-note chords. There are asterisks marking specific notes.

Handwritten musical notation for the third staff of the piece. It features a melodic phrase followed by a double bar line, a repeat sign, and a first ending bracket. The staff concludes with a decorative flourish.

Handwritten musical notation for the first staff of the second piece. It starts with a treble clef and a 3/8 time signature. The melody is composed of eighth and sixteenth notes. The title "Rondeau" is written in cursive below the staff.

Rondeau

Handwritten musical notation for the second staff of the piece. It continues the melody with various rhythmic patterns, including sixteenth-note runs and eighth-note chords. There are asterisks marking specific notes.

Handwritten musical notation for the third staff of the piece. It features a melodic phrase followed by a double bar line, a repeat sign, and a first ending bracket. The staff concludes with a decorative flourish.

Handwritten musical notation for the first staff of the piece. It features a treble clef, a key signature of one flat (B-flat), and a common time signature. The melody is written in a single line with various rhythmic values including eighth and sixteenth notes, and rests. A fermata is placed over the final note of the staff.

Las Combatans,

Handwritten musical notation for the second staff of the piece. It features a bass clef, a key signature of one flat, and a common time signature. The melody is written in a single line with various rhythmic values including eighth and sixteenth notes, and rests. A fermata is placed over the final note of the staff.

Handwritten musical notation for the third staff of the piece. It features a bass clef, a key signature of one flat, and a common time signature. The melody is written in a single line with various rhythmic values including eighth and sixteenth notes, and rests. A fermata is placed over the final note of the staff.

Handwritten musical notation for the first staff of the second piece. It features a treble clef, a key signature of one flat, and a common time signature. The melody is written in a single line with various rhythmic values including eighth and sixteenth notes, and rests. A fermata is placed over the final note of the staff.

Las Berce,

Handwritten musical notation for the second staff of the second piece. It features a bass clef, a key signature of one flat, and a common time signature. The melody is written in a single line with various rhythmic values including eighth and sixteenth notes, and rests. A fermata is placed over the final note of the staff.

Handwritten musical notation for the third staff of the second piece. It features a bass clef, a key signature of one flat, and a common time signature. The melody is written in a single line with various rhythmic values including eighth and sixteenth notes, and rests. A fermata is placed over the final note of the staff.

53. *Comas*

Handwritten musical notation for 'Comas' on a single staff. The piece begins with a treble clef and a common time signature (C). The melody consists of a series of eighth and sixteenth notes, with some notes marked with an asterisk (*). The piece concludes with a double bar line and a fermata over the final note.

Handwritten musical notation on a single staff, continuing the piece. It features a treble clef and a common time signature. The notation includes various rhythmic values and some notes marked with an asterisk. The piece ends with a double bar line and a fermata.

54. *Gavotte*

Handwritten musical notation for 'Gavotte' on a single staff. It starts with a treble clef and a common time signature. The melody is composed of eighth and sixteenth notes, with several notes marked with an asterisk. The piece ends with a double bar line and a fermata.

Handwritten musical notation on a single staff, continuing the piece. It features a treble clef and a common time signature. The notation includes various rhythmic values and some notes marked with an asterisk. The piece ends with a double bar line and a fermata.

An empty musical staff with a treble clef and a common time signature.

An empty musical staff with a treble clef and a common time signature.

Air du Prologue.

Heureux qui peut plaire.

Chœur