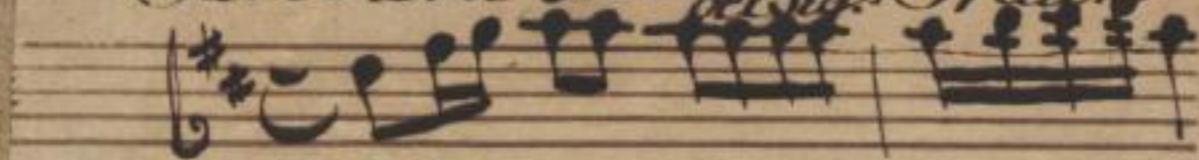


Schraner No: II.  
13. Fach C. Lage.

No: 6.) Sinfonia.  
Angelica.

Violini Ob. Cor. Viola e Basso.

Partitura sola del Sig. Graun



(480, 25)

Musica	
2953	
F	14

Gx
403

Sächs.  
Landes-  
Bibl.









III-9-159 c Id-G 54 09 11 2 350

Ca. 403 (1-10)

20

angeliq.

Sinfonia

di Graun

A handwritten musical score for a symphony (Sinfonia) by Georg Friedrich Händel. The score is written on aged, yellowed paper and consists of ten staves. The top staff is the first violin part, marked 'angeliq.' (angelic). The second staff is the second violin part. The third staff is the viola part. The fourth staff is the cello part. The fifth staff is the double bass part. The sixth staff is the flute part. The seventh staff is the oboe part. The eighth staff is the bassoon part. The ninth staff is the clarinet part. The tenth staff is the string ensemble part. The music is in common time (C) and features a variety of rhythmic patterns, including eighth and sixteenth notes, and rests. Dynamics such as 'p' (piano) and 'f' (forte) are indicated throughout the score. The handwriting is in a clear, cursive style typical of the 18th century.

Mus. 2953-7-14

Sächs.  
Landes-  
Bibl.

A handwritten musical score on aged, yellowed paper. The score consists of ten staves of music, arranged in two systems of five staves each. The notation is in a historical style, featuring various note values, rests, and accidentals (sharps and naturals). The paper shows signs of age, including foxing and some staining. A small red number '2' is written in the top right corner, and a larger black number '2' is written at the bottom center of the page. The handwriting is in dark ink, and the overall appearance is that of an early manuscript.

A handwritten musical score on aged, yellowed paper. The score consists of ten staves. The first staff is a treble clef with a key signature of one sharp (F#). The second staff is a treble clef with a key signature of two sharps (F# and C#). The third staff is a treble clef with a key signature of two sharps. The fourth staff is a treble clef with a key signature of two sharps. The fifth staff is a bass clef with a key signature of two sharps. The sixth staff is a treble clef with a key signature of two sharps. The seventh staff is a treble clef with a key signature of two sharps. The eighth staff is a treble clef with a key signature of two sharps. The ninth staff is a treble clef with a key signature of two sharps. The tenth staff is a treble clef with a key signature of two sharps. The music is written in a cursive, handwritten style. There are various musical notations including notes, rests, accidentals, and dynamic markings such as 'p' (piano) and 'f' (forte). The paper shows signs of age, including foxing and some staining.



A page of handwritten musical notation on aged, yellowed paper. The page contains ten staves of music. The notation is dense and includes various musical symbols such as notes, rests, accidentals (sharps and naturals), and dynamic markings like 'p' (piano) and 'f' (forte). The ink is dark brown. The paper shows signs of age, including some staining and foxing. The number '3' is written in red in the top right corner. The bottom of the page is slightly torn.

A page of handwritten musical notation on aged, yellowed paper. The score consists of ten staves. The first staff begins with a treble clef and a key signature of one sharp (F#). The notation is dense, featuring various note values, rests, and accidentals. The paper shows signs of age, including foxing and some staining. At the bottom center of the page, the number '5' is written.

A page of handwritten musical notation on aged, yellowed paper. The page contains ten staves of music, arranged in two systems of five staves each. The notation is in a historical style, featuring various note values, rests, and accidentals. The first staff begins with a treble clef and a common time signature. The second staff starts with a treble clef and a key signature of one sharp (F#). The third staff begins with a treble clef and a key signature of one sharp. The fourth staff starts with a treble clef and a key signature of one sharp. The fifth staff begins with a treble clef and a key signature of one sharp. The sixth staff starts with a treble clef and a key signature of one sharp. The seventh staff begins with a treble clef and a key signature of one sharp. The eighth staff starts with a treble clef and a key signature of one sharp. The ninth staff begins with a treble clef and a key signature of one sharp. The tenth staff starts with a treble clef and a key signature of one sharp. The paper shows signs of age, including foxing and some staining.

A page of handwritten musical notation on aged, yellowed paper. The score consists of ten staves of music, arranged in two systems of five staves each. The notation is in a historical style, featuring various note values, rests, and clefs. The first staff begins with a treble clef. The second staff contains a complex passage with many beamed notes and slurs. The third and fourth staves show a more melodic line with some accidentals. The fifth staff has a double bar line at the beginning. The sixth staff continues the melodic line. The seventh staff has a double bar line at the beginning and contains a complex passage with many beamed notes. The eighth staff is a simpler melodic line. The ninth and tenth staves continue the melodic line, with the tenth staff ending with a double bar line. There are several dynamic markings, including 'p' (piano) and 'f' (forte), scattered throughout the score. The paper shows signs of age, including foxing and some staining.

A page of handwritten musical notation on aged, yellowed paper. The score consists of ten staves. The notation is in a historical style, featuring various note values, rests, and complex rhythmic patterns. The first staff begins with a treble clef and a key signature of one sharp (F#). The music is written in a single system across the ten staves. There are some markings above the notes, possibly indicating dynamics or articulation. The paper shows signs of age, including foxing and some staining.

5

58

A page of handwritten musical notation on aged, yellowed paper. The page contains ten staves of music, arranged in two systems of five staves each. The notation is in a historical style, featuring various note values, rests, and clefs. The paper shows signs of age, including foxing and some staining. The music appears to be a single melodic line, possibly for a lute or similar instrument, given the frequent use of double sharps and the complex rhythmic patterns. The staves are numbered 1 through 10 at the beginning of each line.

Handwritten musical score on aged paper, featuring ten staves of music. The notation includes various note values, rests, and dynamic markings such as 'p' and 'ob.'. The paper shows signs of age and wear.

A page of handwritten musical notation on aged, yellowed paper. The score consists of ten staves. The first staff begins with a treble clef and a key signature of one sharp (F#). The notation is dense, featuring various note values, rests, and dynamic markings such as 'p' (piano) and 'f' (forte). There are several double bar lines with repeat signs (two short parallel lines) at the beginning and end of the piece. The paper shows signs of age, including foxing and some staining.



*Larghetto*

The image displays a page of handwritten musical notation on aged, yellowed paper. The notation is organized into two systems, each consisting of four staves. The first system begins with a treble clef on the top staff and a bass clef on the bottom staff. The key signature is one sharp (F#). The notation includes various rhythmic values, including eighth and sixteenth notes, often grouped with beams and slurs. The second system continues the musical piece with similar notation. The paper shows signs of age, including foxing and staining, particularly in the center and right-hand side. There are double bar lines at the end of each system. A faint, illegible signature or name is visible in the lower right quadrant of the page.

Handwritten musical notation on four staves, measures 1-13. The notation includes various note values, rests, and accidentals. There are some handwritten annotations, including a 't' and a 'p'.

Handwritten musical notation on four staves, measures 14-27. The notation includes various note values, rests, and accidentals. There are some handwritten annotations, including a 'p' and a 't'.

Handwritten musical score on aged paper, featuring two systems of four staves each. The notation includes treble and bass clefs, a key signature of one sharp (F#), and various rhythmic values such as eighth and sixteenth notes. The first system includes a complex melodic line with triplets and slurs, and a bass line with a double bar line at the start. The second system continues the melodic and bass lines with similar notation. The page number '15' is written at the bottom center.

Handwritten musical score on aged paper, consisting of two systems of four staves each. The notation includes various note values, rests, and dynamic markings such as *tr* (trills) and *tr* (trills). The paper shows signs of age, including foxing and staining. A red number '9' is written in the upper right corner. The page number '16' is written at the bottom center.

*Allegro*

Handwritten musical score on aged paper, featuring ten staves of music. The notation includes various note values, rests, and accidentals. The paper shows signs of age with some staining and foxing. The score is written in a historical style, possibly from the 18th or 19th century.

A page of handwritten musical notation on aged, yellowed paper. The page contains ten staves of music. The notation is in a historical style, likely from the 17th or 18th century. The first staff begins with a treble clef and a key signature of one sharp (F#). The music consists of various note values, including minims, crotchets, and quavers, along with rests and bar lines. There are several instances of 't' above notes, possibly indicating trills or ornaments. The paper shows signs of age, with some staining and wear, particularly at the bottom edge. The number '19' is written at the bottom center of the page.