

6. Cantata.

Largo Largo.

Belle stille che grondate

Detailed description: This system contains the first vocal entry and piano accompaniment. The vocal line is written on a single staff with a treble clef and a key signature of one sharp (F#). The piano accompaniment is on a grand staff (treble and bass clefs). The tempo is marked 'Largo Largo'. The lyrics 'Belle stille che grondate' are written below the vocal line.

Belle stille che grondate da begl.

Detailed description: This system contains the second vocal entry and piano accompaniment. The vocal line continues with the lyrics 'Belle stille che grondate da begl.'. The piano accompaniment continues with similar rhythmic patterns. The tempo remains 'Largo Largo'.

oe - chi del mio bene so' perche so' perche per :

= che uoi non cessate so' perche so' perche per :

= che perche uoi non cessa - - - te so' perche uoi non ces

- sa - te Voi strin

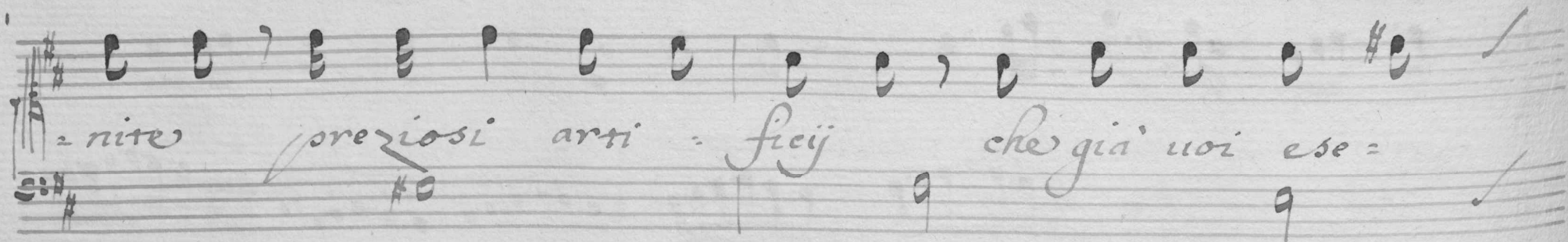
z gete le ca - tene e aggiungete al Cor le sone

Questo è il uanto che porta - te questo è il

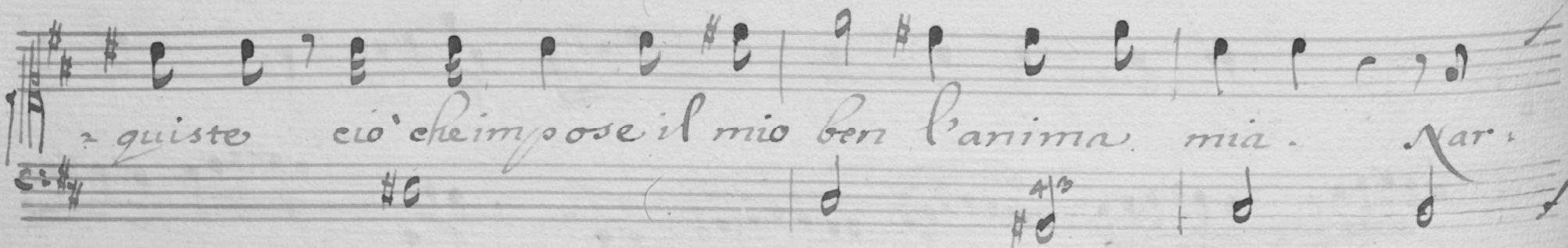
uanto che porta - te

Da Capo.

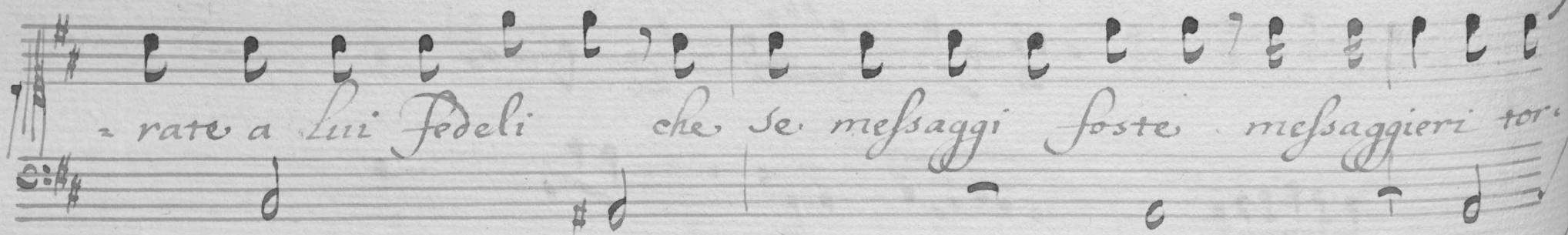
Tornate dunque al Cor se pur dal Cor ue:



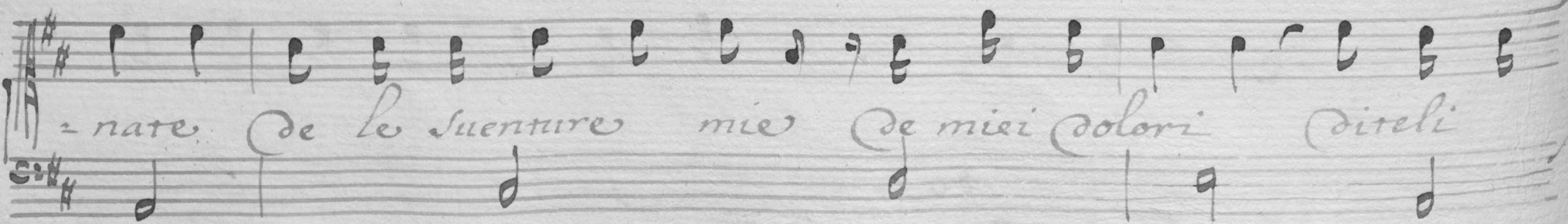
nitate preziosi arti - fiej che già uoi esse =



quistes cio' che impose il mio ben l'anima mia. Nar.



rate a Lui Fedeli che se messaggi foste messaggieri tor.



rate. De le sventure mie De miei dolori diteli

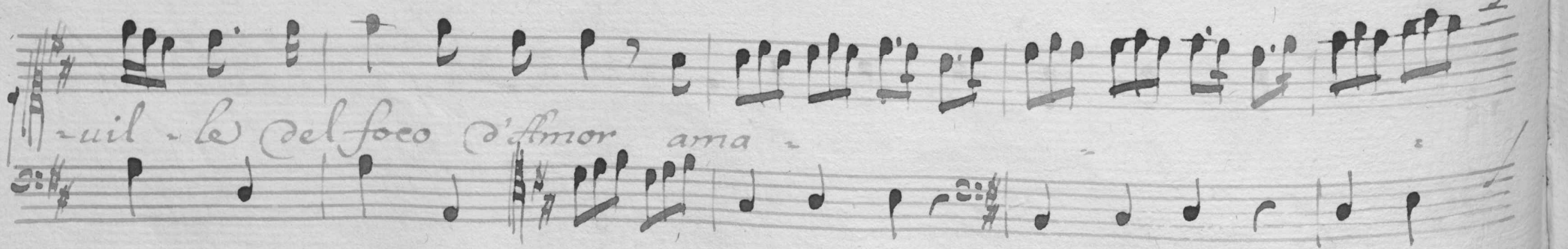
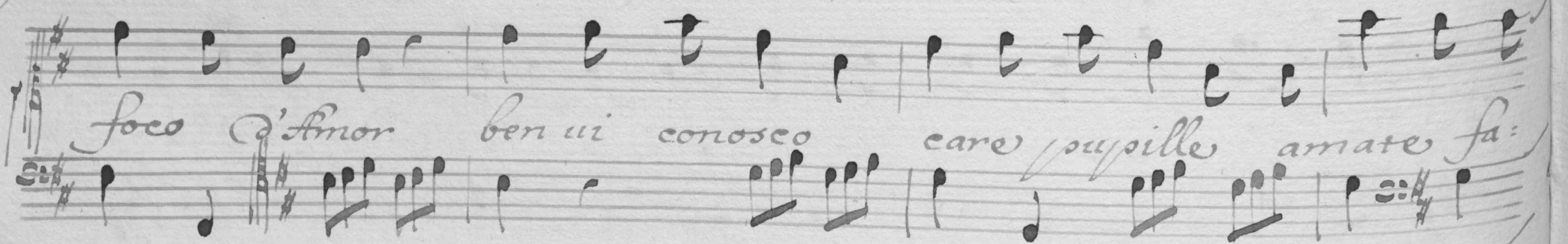
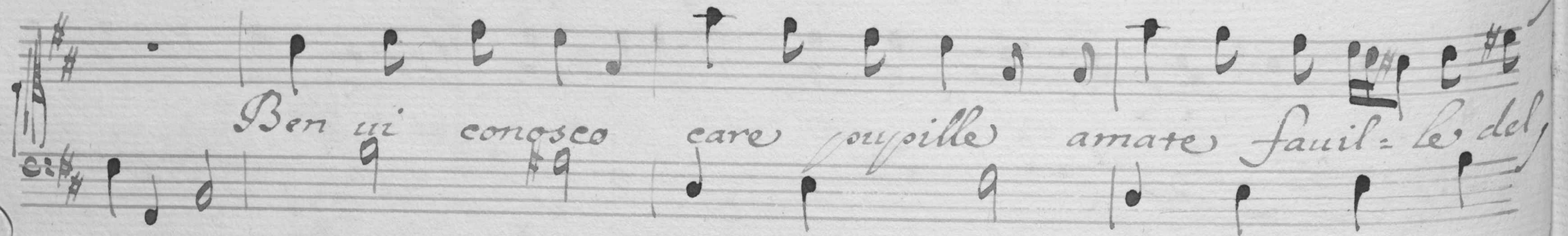
our che s'egli uà superbo d'uccider chi pena

basta che ancor u' inuia su' gl'occhi una sol uolta che un tro:

feo sarà del suo bel pianto l'uccider mè l'uccider

me che già soffersi tanto.

Aria



te fauil - le del foco d'amor ben ui conosco care ju:

sille amate fauil - le del foco d'amor ama:

te fauil - le del foco d'amor.

Handwritten musical notation on a single staff, featuring a treble clef and a key signature of one sharp (F#). The notes are mostly quarter and eighth notes, with some rests.

e il vostro pianto semplice brama d'uccider chi u'ama con

Handwritten musical notation on a single staff, featuring a bass clef and a key signature of one sharp (F#). The notes are mostly quarter and eighth notes, with some rests.

Handwritten musical notation on a single staff, featuring a treble clef and a key signature of one sharp (F#). The notes are mostly quarter and eighth notes, with some rests.

tenero ardor e il vostro pianto semplice brama d'uc-

Handwritten musical notation on a single staff, featuring a bass clef and a key signature of one sharp (F#). The notes are mostly quarter and eighth notes, with some rests.

Handwritten musical notation on a single staff, featuring a treble clef and a key signature of one sharp (F#). The notes are mostly quarter and eighth notes, with some rests.

cider chi u'ama con tenero ardor d'uccider chi

Handwritten musical notation on a single staff, featuring a bass clef and a key signature of one sharp (F#). The notes are mostly quarter and eighth notes, with some rests.

Handwritten musical notation on a single staff, featuring a treble clef and a key signature of one sharp (F#). The notes are mostly quarter and eighth notes, with some rests.

u'ama d'ucci der chi u'ama con tenero ardor.

Handwritten musical notation on a single staff, featuring a bass clef and a key signature of one sharp (F#). The notes are mostly quarter and eighth notes, with some rests.

Da Capo.