

Handwritten musical score on four staves. The first staff begins with a treble clef and a common time signature (C). The second and third staves also begin with a treble clef and a common time signature. The fourth staff is labeled "Aria" and begins with a common time signature. The notation includes various note values, rests, and bar lines.

Handwritten musical score on four staves. The first staff begins with a treble clef, a common time signature, and a key signature of one sharp (F#). The second staff begins with a treble clef, a common time signature, and a key signature of one sharp. The third staff begins with a treble clef, a common time signature, and a key signature of one sharp. The fourth staff begins with a bass clef, a common time signature, and a key signature of one sharp. The notation includes various note values, rests, and bar lines.

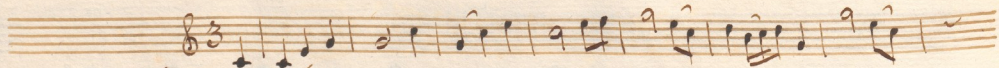
Handwritten musical score for a four-part setting, likely a Mass. The score is written on four staves. The top two staves are for the vocal parts (Soprano and Alto), and the bottom two are for the keyboard (Right and Left Hand). The music is in a common time signature (C) and features a variety of note values including quarter, eighth, and sixteenth notes, as well as rests. The handwriting is in brown ink on aged paper.

Handwritten musical score for a four-part setting, likely a Mass. The score is written on four staves. The top two staves are for the vocal parts (Soprano and Alto), and the bottom two are for the keyboard (Right and Left Hand). The music is in a common time signature (C) and features a variety of note values including quarter, eighth, and sixteenth notes, as well as rests. The handwriting is in brown ink on aged paper.

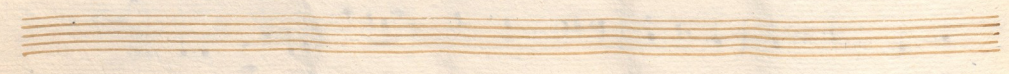
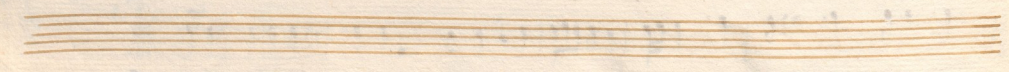
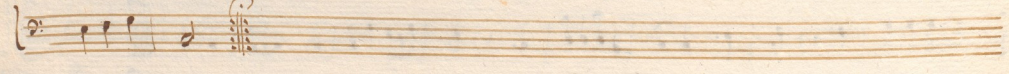
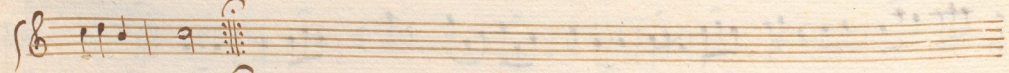
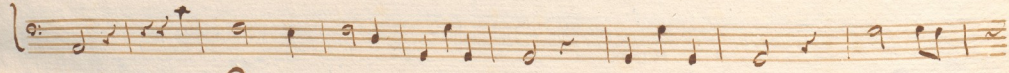
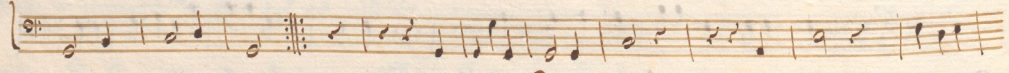
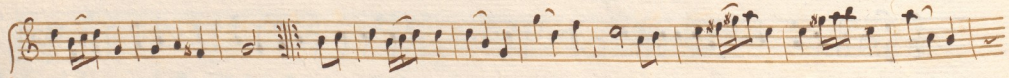
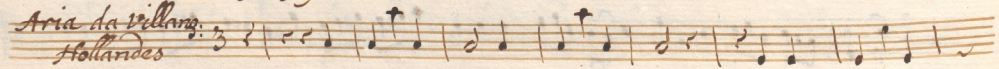


Handwritten musical score for the first system, consisting of four staves. The notation includes various note values, rests, and bar lines. The first staff begins with a treble clef and a 6/8 time signature. The second staff also starts with a treble clef and a 6/8 time signature. The third staff uses an alto clef and a 6/8 time signature. The fourth staff is labeled "Figure" and begins with a bass clef and a 6/8 time signature. The music concludes with a double bar line and repeat dots.

Handwritten musical score for the second system, consisting of four staves. The notation includes various note values, rests, and bar lines. The first staff begins with a treble clef. The second staff starts with a treble clef. The third staff uses an alto clef. The fourth staff begins with a bass clef. The music concludes with a double bar line and repeat dots.



*Aria da Villano:  
Hollandes*





Handwritten musical notation on a single staff, featuring a treble clef and a 2/2 time signature. The notation includes various note values, rests, and slurs.

*Aria.* Handwritten musical notation on a single staff, featuring a bass clef and a 2/2 time signature. The notation includes various note values and rests.

Handwritten musical notation on a single staff, featuring a treble clef and a 2/2 time signature. The notation includes various note values, rests, and slurs.

Handwritten musical notation on a single staff, featuring a bass clef and a 2/2 time signature. The notation includes various note values, rests, and slurs.

Handwritten musical notation on a single staff, featuring a treble clef and a 2/2 time signature. The notation includes various note values, rests, and slurs.

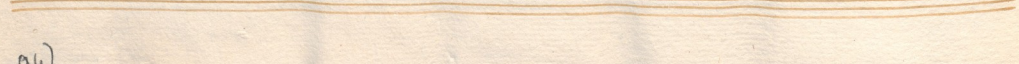
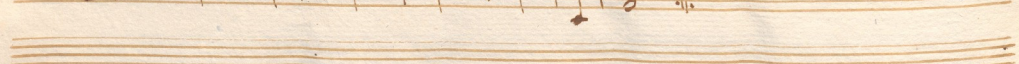
Handwritten musical notation on a single staff, featuring a bass clef and a 2/2 time signature. The notation includes various note values, rests, and slurs.

Handwritten musical notation on a single staff, featuring a treble clef and a 2/2 time signature. The notation includes various note values, rests, and slurs.

Handwritten musical notation on a single staff, featuring a bass clef and a 2/2 time signature. The notation includes various note values, rests, and slurs.

Empty musical staff.

Empty musical staff.

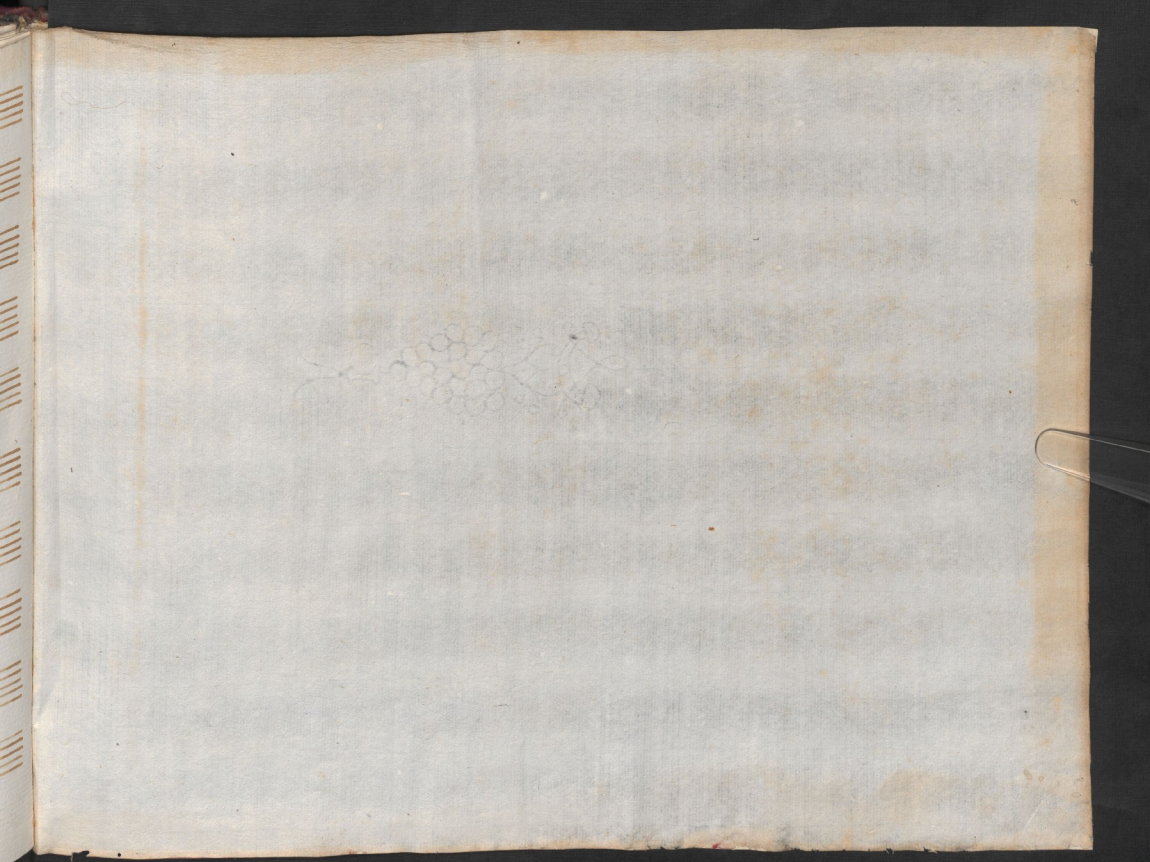


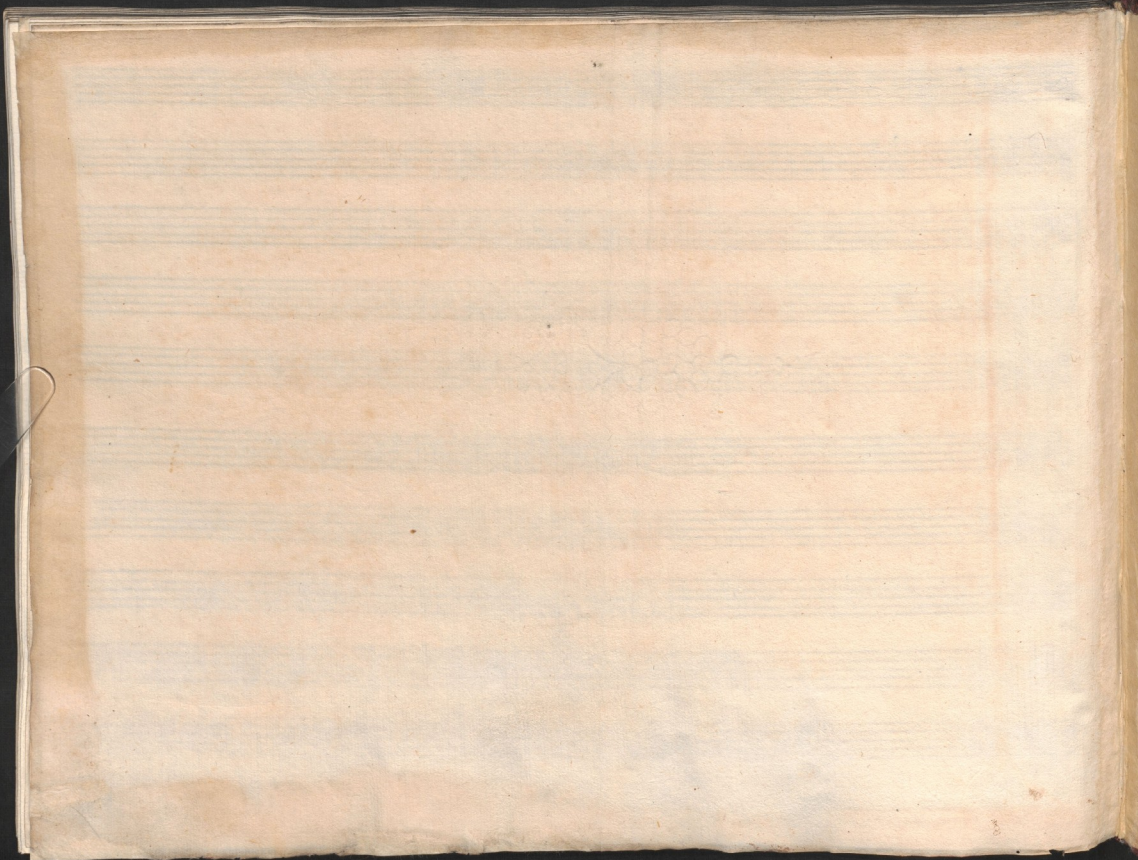


95/11











ÖNB



+Z104640108

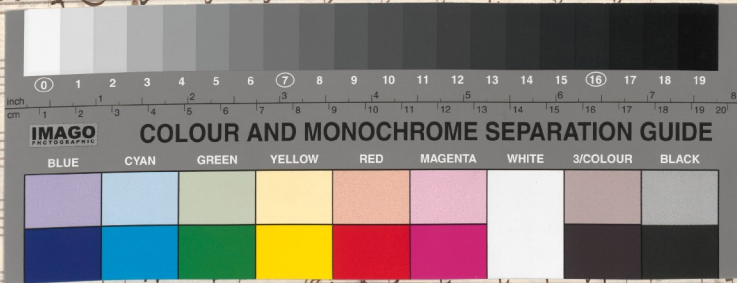
Anno Terzo.

Sala Regia

Scena i.

Elisena, e Teucro.

Tenore.



= caro,

= perba di = genia

Pris che tramonti il giorno, udrai sua